



MapInfo Professional 10.5 Printing Guide

The purpose of this guide is to assist you in getting the best possible output from your MapInfo Professional software. We begin by covering the new print, import, and export features and continue with preferences and printing options available in MapInfo Professional. Then we give you some helpful tips and tricks and finally we help you trouble shoot issues you may be experiencing with your own use of MapInfo Professional.

We have updated this document with new features and new resolutions to existing issues.

United States:
Phone: 518.285.6000
Fax: 518.285.6070
Sales: 800.327.8627
Government Sales: 800.619.2333
Technical Support: 518.285.7283
Technical Support Fax: 518.285.6080
pbinsight.com

Canada:
Phone: 416.594.5200
Fax: 416.594.5201
Sales: 800.268.3282
Technical Support: 518.285.7283
Technical Support Fax: 518.285.6080
pbinsight.ca

Europe/United Kingdom:
Phone: +44.1753.848.200
Fax: +44.1753.621.140
Technical Support: +44.1753.848.229
pbinsight.co.uk

Asia Pacific/Australia:
Phone: +61.2.9437.6255
Fax: +61.2.9439.1773
Technical Support: 1.800.648.899
pbinsight.com.au

©2010 Pitney Bowes Software Inc. All rights reserved. MapInfo, Group 1 Software, and MapInfo Professional are trademarks of Pitney Bowes Software Inc. All other marks and trademarks are property of their respective holders.

May 14, 2010

Table of Contents

- ◆ **New in this Release** 1
- ◆ **Printing in MapInfo Professional** 3
- ◆ **General Printing Tips and Tricks** 6
- ◆ **Resolutions to Known Printing Issues** 8
- ◆ **Enhancements Added in Earlier Versions** 12

New in this Release

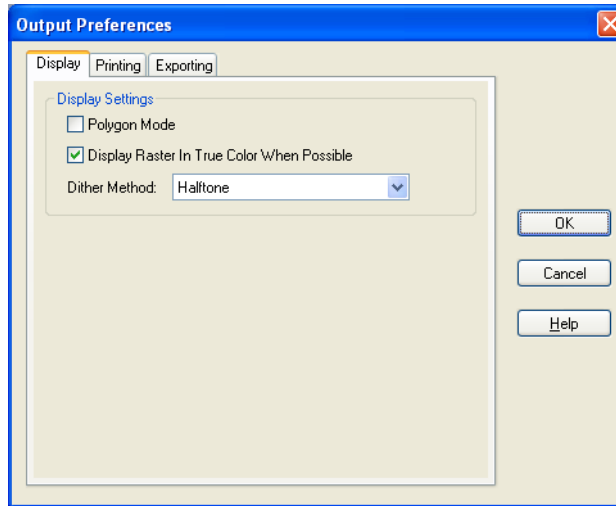
Polygon Mode Printing

This release of MapInfo Professional introduces the new way of drawing complicated polygons, such as those containing holes or many nodes through a User Interface. This was due to an issue with printing such objects using an Adobe PDF printer driver. It left visible seams and gaps in the image when the PDF was printed. These seams and gaps were not visible on screen nor when printed using other printer drivers.

Printing with the new method means that large polygons are now rendered as-is not broken into smaller polygons, as the older method does. Additionally, the new method uses different calls that specifically support drawing polygons with holes. The older method manipulates the polygon with holes to draw as a single polygon. This is what caused seams and gaps to appear in the PDF

i Because this issue does not affect all users of MapInfo Professional who print maps, we continue to provide the original polygon drawing method.

To print/export/display files with a large number of polygons you can select polygon mode by checking the checkbox on output preferences dialogue respective to the type of output. To select the output preferences click **Options > Preferences > Output Preferences**. The Output Preferences dialog box id displayed.

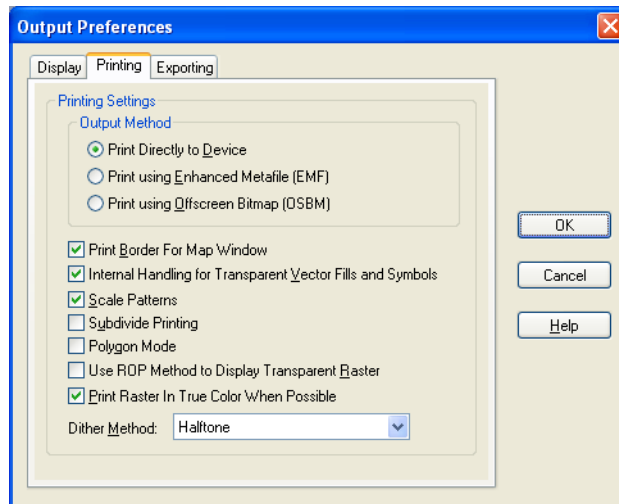


i The setting is independent to output method and is not saved on per window basis. This setting will not affect any other option's User Interface.

Printing to an Offscreen Bitmap (OSBM)

The new printing method that renders a print job to offscreen bitmaps prior to sending it to the printer or plotter can be accessed through two ways:

Click **Options > Preferences > Output Preferences**. The Output Preferences dialog box is displayed.



This is used when printing maps and layouts containing translucency and/or anti-alias content. For details, see [Printing Maps with Translucency and Anti-Alias Smoothing](#).

Subdivide Printing

In earlier versions of MapInfo Professional, there was an optional registry setting, called SubdividePrinting, to allow print jobs to be broken into multiple, smaller print requests. This was especially useful if printing large raster/translucent maps to large paper sizes. Now that option has been added as a Preference. The preference is initialized using the registry setting if it existed.


Click **Options > Preferences > Output Settings** under the **Printing** tab. There is a checkbox for **Subdivide Printing**. If checked, the print job will be broken into multiple smaller print request. If unchecked, the print is done in a single request.

Printing to a PDF

The MapInfo PDF Printer has been updated to a new version for 10.5. MapInfo Professional lets you save a map to a layered PDF file. Since Acrobat 6.0, PDFs are capable of holding multiple pages of information in the same space through the use of Optional Content Groups (OCG), which are more commonly known as layers. Layers in PDFs are very similar to MapInfo Professional map layers.

Your PDF now displays layers in the same order as shown in the MapInfo Professional Layer Control window, and it displays translucency. The MapInfo PDF Printer supports GeoRegistration, which stores the bounds and coordinate systems of the map view in the PDF file. The PDF file also stores the attribute data of the records on the map.

New in this release when saving to a PDF file:

- **Print to PDF** – Select **File > Print to PDF** to save your map, browser, graph, or layout to a PDF file. This option is similar to Save As, and gives you the option to concatenate PDF files.
- **MapInfo PDF Printer tool** – The Main menu includes a new MapInfo PDF Printer  tool, which is the same as selecting **File > Print to PDF** to save your map, browser, graph, or layout to a PDF file.
- **Translucency** – You can create a layered PDF that includes translucent layers in MapInfo Professional 10.5.
- **PDF Preferences** – The MapInfo Professional Print dialog (select **File > Print**) now includes a **PDF** button that displays after selecting MapInfo PDF Printer from the Name list. This button launches the PDF Preferences dialog. From this dialog, you can make the following settings:

Layered PDF

Select to save layers for a map, as shown in the MapInfo Professional Layer Control window, to the PDF file. When saving a layout window, each frame, such as map frame and legend frame, becomes a layer in the PDF.

Georegistered PDF

Select to store the bounds and coordinate systems of the map or layout view in the PDF file.

Add Attribute data to PDF

Select to store the attribute data of the records on the map in the PDF file.

Automatically open the PDF

Select to have the PDF file open after it is generated.

Selecting the Layered PDF option in the PDF Preferences dialog box enables the Direct to Device option, and disables using OSBM and EMF.

If you select the Print using EMF or Print using the Offscreen Bitmap (OSBM) output method and later on select the Layered PDF from the PDF Preferences dialog box, then the output method forcibly sets to Direct to Device. However, disabling the Layered PDF option resets the print output method back to your original selection, EMF/ OSBM.


- **Context Sensitive Help for the MapInfo PDF Printer** – This version of the MapInfo PDF Printer includes documentation in the form of a help system. To access this help system, select **File > Print** and click **Properties** in the Print dialog box. This opens the MapInfo PDF Printer Properties dialog box, which now includes a Help button on each tab.

Printing in MapInfo Professional


Before you start printing your map or your graphs, you may want to create a new layout so you can arrange your graphs, maps, legends, titles, etc. for the best effect. Choose **Windows > New Layout Window** to put together a more effective presentation. We recommend that you use layout windows for printing because it ties directly to the printer driver.

To print a map, layout, or graph from MapInfo Professional:


1. When you have your map or layout the way you want it, choose **File > Print** to display the Print dialog box.

 When you print a layout, the **Options** button does not display. When you print a graph, the **Advanced** button does not display.

2. Select the printer or plotter you want to use for this workspace from the Name drop-down list. The properties that are available for this device are printer/plotter dependent. Please check your device manufacturer's manual for property details.

 Any selections you make in the **Properties** options will override the selections made in the preferences for the current print session.

3. Select the print range of your output and the number of copies you want in the appropriate fields.
4. To set further map print options, click the **Options** button to display the Map Print Options dialog box.

 You cannot select these options for a layout.

5. Make your selections and click **OK** to return to the Print dialog box.

Map Size

Select the size of the map in this group; the options are **Window Size**, **Fit to Page**, and **Custom**. As you make selections, the **Custom Scale**, **Custom Width** and **Custom Height** entries change.

Window Size. Click this button to print the map as it displays on your computer screen.

Fit to Page. Click this button to fit the map to the page size you selected in preferences.

Custom. Click this button to enter your own custom scale, width, and height entries in the fields provided.


Map Contents

Select an option in this group to determine the map contents you want to print; the options are **Same as Window** and **Centered on Window**.

Same as Window. Click this button to print the map contents as it appears in the Map window, with the same proportions and content as you see.

Centered on Window. Click this button to center as much of the current map that fits on the page. When you select this option, the image may print on more than one page depending upon fit. In general when you select this option, MapInfo Professional assumes you want to select the **Fit to Page** radio button and selects this for you.

6. To set the advanced print options, click **Advanced** to display the Advanced Printing Options dialog box.

 You cannot select these options for a graph.

7. Select the appropriate options in this dialog box and click **OK** to return to the Print dialog box. These options are the same as those you select in the Output Settings Preferences dialog box. Selecting options here overrides the setting you selected in the Output Settings preferences for the current print session.

Output Method

There are two output methods.

- **Print Directly to Device.** Use this option to print your image file directly from MapInfo Professional. This is the default setting and is same printing from all versions before 6.0.
- **Print Using Enhanced Metafile (EMF).** Use this option to generate an enhanced metafile of your MapInfo Professional image before sending it to the printer. This option takes advantage of current technology to shrink the spool size and print your file quicker without sacrificing quality.

Print Border for Map Window

Select this check box to print a black border around the image you are printing. Clear this check box to print the image without a border. This check box is selected by default.

Internal Handling for Printing Transparent Vector Fills and Symbols

Special programming has been added to handle transparent fill patterns and bitmaps for vector images when you print. Select this check box to use this functionality or clear it to let the printer or plotter to manage this type of work. This check box is selected by default.

Scale Patterns

Select this check box to print non-transparent fill patterns that look like what you see on your screen. This check box is checked by default. Clear this check box to let the printer driver have exclusive control over rendering the pattern fills.

Use ROP Method to Display Transparent Raster

Select this check box to allow the internal ROP (Raster Overlay by Pixel) to manage the transparent pixels when printing raster images. Since the ROP Method is largely a display method, not all printers and plotters can use it. We recommend that you experiment with this setting until you get the results you want when printing raster images. This setting has no effect when printing vector layers. This check box is cleared by default.

Print/Export Raster in True Color When Possible

Select this check box to print your 24-bit raster or grid file images in true color. Make sure your printer settings are greater than 256 colors. This check box is selected by default.

8. When you have completed these selections and returned to the Print dialog box, click **OK** to begin printing.

Recommendations for Effective Pattern Scaling

When you are printing, find out what type of printer driver you are using. Many PCL6 and some HPGL drivers handle fill pattern scaling and give you control over this feature. Turning off their scaling may be the difference between what you see in print and what you see on your monitor. We recommend that you try turning off your driver's scaling options and try ours first, because we have enhanced our method to better meet your Map and Layout window requirements. To turn our pattern scaling options on, check the **Scale Patterns** check box in the Output Preferences dialog box. Then try turning off our scaling and turn theirs back on to see which you like better. Tests show that our scaling produces color output that more closely matches your screen's display.

If you are printing to postscript drivers using LanguageLevel 2 or 3, we find that some of the Microsoft drivers do not support pattern scaling. As a result, our scaling method may not help you. Microsoft recommended that you reset the language level of the postscript driver to LanguageLevel 1 to remove this restriction. We did find some exceptions to this condition. On Windows 2000 some HP Laser Jet and Color Laser Jet postscript drivers using our scaling option printed correctly.

Printing the Map to a File

To print the current map to a file:

1. From the **File** menu, select **Print**. The Print dialog box displays.
2. Select the **Print to File** check box.
3. Click **OK**. The Print to File dialog box displays.
4. Type the name of the file you want to create in the field provided and click **OK**. Use the extension .PRN to help you identify the file as a print file.

Printing to a Layered PDF File

PDFs are capable of holding multiple pages of information in the same space through the use of Optional Content Groups (OCG), which are more commonly known as layers. Layers in PDFs are very similar to MapInfo Professional map layers.

Each layer may hold any portion of the document's objects and layers may be made visible or invisible, showing or hiding their contained objects, in any combination. By selectively hiding layers, you reduce distractions to concentrate on particular areas or types of objects. Layers can be organized into groups and the visibility option can apply to all layers within a group as one step.

To print a map window or a layout window to a layered PDF:

1. From the **File** menu, select **Print**. The Print dialog box displays.
2. From the **Name** list, select **MapInfo PDF Printer**. This PDF driver is installed with MapInfo Professional.
3. Optionally, click **Properties** to set any printing preferences.
4. Click **OK** to print to a layered PDF file.



It may take some time to process a large map with many layers.

When saving a layout window to a layered PDF, each frame (such as map frame and legend frame) becomes a layer in the PDF.

You can continue to use a different PDF driver, not the MapInfo PDF Printer. Doing so creates a static PDF map without layer information, so you do not have the ability to turn on or off particular map layers.

Labels in a map window save to a separate layer in the PDF with a name that includes the parent layer name.

Adornments save as a separate Adornments layer in the PDF.

Annotations in a layout save as a separate layer named **Annotation** in the PDF.

An empty Cosmetic layer does not save to the PDF.

Restrictions when Printing to a Layered PDF

- Embedded legends in Mapper windows that export to the PDF file do not toggle on or off in the PDF.

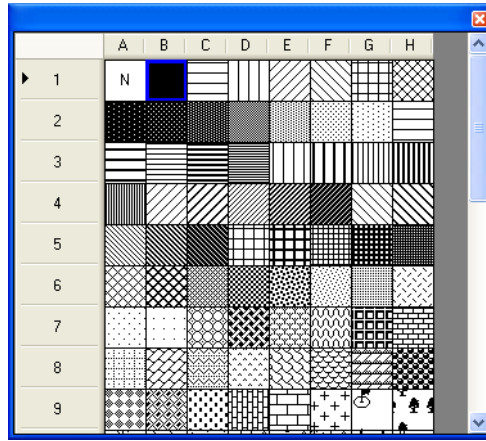
General Printing Tips and Tricks

Good first steps in troubleshooting a printing problem are to make sure you have downloaded and installed the latest patch for MapInfo Professional and are using the latest printer driver for your printer/operating system. Exceptions are noted in this document.

Embedding MapInfo Professional Graphics Tip. When you embed a MapInfo map or graph in another application (such as Word or PowerPoint), click outside the map/graph before you use the **Print** or **Print Preview** commands. This allows the container application to take over previewing or printing properly. This is particularly true if you have just made changes to the map or graph you are printing.

HP 755 Driver Suggestion. If you are having difficulties printing using this plotter model, try the plotter driver for the HP 650C (C2859B) instead. In many cases, if you are having difficulty with a printer or plotter model and a similar model exists, you can substitute the similar model's driver for the current one and get good results. For example, you can use the printer driver for the HP 8500 DN Color LaserJet with the HP8550 color LaserJet driver).

Need for Speed When Using Fill Patterns? Note that fill patterns on the first row of the Region Style dialog box (see next figure) are Windows standard and tend to print faster. The other patterns are bitmaps MapInfo has created for your use. You might want to consider this when you are selecting fill patterns.



1 Use the fill patterns from this row for fast printing results.

Speed Still an Issue? If you want to improve printer speed, and your printer has **Fast, Normal, Best** print quality options, we suggest you select **Fast**.

If your image is large and you are printing at a resolution of 600 DPI or greater, your image may exceed this limitation. To print the image, reduce the resolution of the printout or shrink the size of the image. See also [Printing Maps Larger than 1.6 Meters \(63 Inches\)](#).

Translucent Raster Maps? You cannot print a translucent raster map or grid on Windows 9X platforms or export them to EMF or WMF file formats. You need to use a non-metafile (i.e. .BMP or .TIF) format to export raster images on Windows 9X.

Old Driver Works, New Driver Doesn't. When in doubt, if an older driver worked and the new one does not, go back to the older driver. For instructions on reinstalling older versions of printer drivers, see [Hatch Patterns Printing as Black Polygons](#).

Disk Space an Issue? Make sure you have plenty of temporary disk space, particularly if you are using the Print using the Enhanced Metafile option. The system is trying to create a layered bitmap locally on disk.

Print Workspace Path with Map? In some cases, you may want to print the path to a particular workspace with your output. Here is a quick way to do this:

1. Choose **Options > Show MapBasic Window** to display the MapBasic window.
2. Open the workspace you want to print. The path and workspace name display in the MapBasic window.
3. Use **Ctrl C** or **Edit > Copy** to copy the path and workspace name from the MapBasic window.
4. Choose **Window > New Layout Window** to create a new layout window.
5. Make the new Layout window active and use **Ctrl V** or **Edit > Paste** to paste the path into the Layout window. The path may paste in the gray area of the Layout window and may be difficult to see.
6. Select and drag the path to the desired printable location.

Printing Globally? Spool Locally! Try spooling print jobs locally rather than at the plotter. This allows the computer to rasterize your output rather than the printer, which can be more efficient.

1. To set up local print job spooling, choose **Start > Settings > Control Panel > Printers**.
2. Right-click the printer and choose **Properties** to display the printer's properties.
3. Click the **Advanced tab** to display the advanced property options.
4. Click the **Spool Print Documents** button and **Start printing after last page is spooled** button.

i If you do not have administrative rights to your computer, you may not be able to use the spooling option. Contact your IT department if you want to make this change to get their support.

5. Click **OK** to save your changes.

Resolutions to Known Printing Issues

There are many variables that affect printing and plotting with any application, and MapInfo Professional is no exception. MapInfo Professional does not provide its own printer drivers, it uses the existing ones installed under the current Windows operating system. This section addresses specific printer/plotter issues that have been uncovered by users and partners.

Platform Independent Issues

These issues occur regardless of operating system or hardware/software, except where specifically noted. Look for the issue you are working with below and refer to the resolution.

Printing a Layout Window to Multiple Pages

Printers/Plotters: HP Designjet Printers

MapInfo Professional Versions: 4.X and later

Issue: How do you print a layout window to multiple pages?

Resolution: With the layout window active, choose **Layout > Options** to display the **Layout Options** dialog box.

To make the layout page two pages wide and two pages tall, type **2** in the **Layout Size Width** and **Height** fields. Then click **OK**.

Handling the “Unable to Save Window Contents” Message

Printers/Plotters: HP Designjet 1055CM

MapInfo Professional Versions: 7.0+

Issue: This issue comes up whenever users try to print a layout window at 60 in. x 36 in. or larger due to memory issues.

Resolution: In this circumstance, print directly to the device rather than create the Enhanced MetaFile (EMF). Additionally we recommend that you use the appropriate HPGL driver for your printer and operating system. All current HP printer drivers are available at their web site, www.hp.com.

Hatch Patterns Printing as Black Polygons

Printers/Plotters: HP Designjet Series Plotters

MapInfo Professional Versions: All

Issue: When you print maps with hatch patterns, some regions display as solid black.

Resolution: According to Hewlett Packard support, the new HP printer driver (4.63) handles non-Windows standard hatch patterns properly. We recommend that you download and install the new HP 4.63 driver to resolve this problem.

Hatch Patterns are Compressed when I Print

Operating System: Windows 2000

Printers/Plotters: HP LaserJet Series, tested on HP LaserJet 4050 Series PCL 6

MapInfo Professional Versions: 7.0+

Issue: When you use a MapInfo hatch pattern (a pattern not on the first row in the Region Style dialog box), you may notice that the pattern may become very compressed. This is because the patterns are a bitmap that get drawn at a higher printer resolution. The standard Windows patterns do not exhibit this problem. The printer resolution affects the amount of compression.

Resolution: Some printer drivers have a new output setting called Scale Patterns (WYSIWYG) that enables the patterns to scale correctly. In the HP printer we tested, this option is available when you select the **Printing Preferences > Print Quality > Details** options.

Users should turn off either the driver's, or our scaling, as doing both scales fill patterns twice. Try both types of scaling to find the one you like better.

Platform-Specific Issues

These issues pertain to particular operating systems and/or hardware except where specifically noted. These issues are grouped by operating system.

Transparent/Translucent Raster Layers Printing Black

Operating System: Windows 2000

Printers/Plotters Tested: Epson Stylus Color 1520, HP Color LaserJet 8500N, HP Designjet 650C (C2859B), HP Designjet 750, HP Designjet 1055CM, HP Designjet 2500CM, HP Designjet 2500CP, HP DeskJet 1120C, HP DeskJet 855C, HP LaserJet 4MV, HP LaserJet 4Si, HP LaserJet 4050, HP LaserJet 5000N, Lexmark 3200.

MapInfo Professional Versions: 6.5, 7.0+

Issue: PostScript printers print transparent raster layers as black even when you select white as the transparent color. There are several issues here, including the size of the spool file, amount of printer memory, and whether the container (Word, PowerPoint, etc.) supports transparent or translucent objects.

Translucent images do not print correctly if you select the Print Direct to Device option.


Resolution: Typically, if you are working with a PostScript printer driver you should use the Enhanced Metafile approach to printing and let MapInfo Professional handle printing the transparent and translucent layers of raster or grid images. If your printer can use an HPGLRTL driver, use that to improve the output instead.

To set up the Enhanced Metafile process, click the Advanced button in the Print dialog box and select the following options:

- Print using Enhanced Metafile (EMF)
- Internal Handling for Vector Fills and Symbols
- Use ROP Method to Display Transparent Raster
- Print Raster in True Color When Possible

This resolves the issue but the output is often slow.


Additional Recommendation: Most printers should be able to handle the MapInfo Professional generated vector fill pattern styles. However, if you are still having problems, we recommend that you use Windows vector fill patterns that are in the first row of the Region Style dialog box to get better results. See [General Printing Tips and Tricks](#) for more details.

 HP Designjet 1055CM users: These additional property settings have worked for some users. In the Print dialog box, click the **Properties** button and select the **Advanced** tab to display these options:

Process document: In Computer

Sharpen lines: Off

Select the **Options** tab to set the Quality option to **Fast** (draft) and click **OK**.

 HP Plotter users: Make sure you are using an HPGL/RTL driver and not a PostScript driver.

Preferred Printer Uninstalled/Reinstalled Error


Operating System: Windows 2000

Printers/Plotters: Reported with HP Designjet 1055CM but applies to all


MapInfo Professional Versions: 6.0

Issue: You cannot access the printer preferences when you upgrade and install a new printer driver. Usually in these cases, you (or someone in IT) removes the printer and installs a new driver over the network. However the preferred printer setting in the Printer Preferences dialog box is not reset at that time and remains unchanged, which creates a version discrepancy. This causes MapInfo Professional to shut down the Printer Preferences dialog box.

Resolution: To reactivate the printer preferences, close MapInfo Professional and delete the MAPINFOW.PRF (Preferences) file. Do not make any changes to the file, just delete it. When you reopen the application, MapInfo Professional re-creates the preferences file and resets the entries to the MapInfo Professional defaults.

 You will have to re-enter your preferences when you return to the preferences dialog boxes.

After you have deleted the .PRF file, the **Print** button in the Preferences dialog box will re-activate. Select the desired printer as the MapInfo preferred printer.

 If MapInfo Professional is open when the .PRF file is deleted, MapInfo Professional retains the current preferences and creates a new .PRF file when you close the program.

Plotting 54" Layouts

Operating System: Windows 2000

Printers/Plotters: HP Designjet 1055CM, HP Designjet 2500CP, HP Designjet 3500CP

MapInfo Professional Versions: 6.0, 6.5, 7.0+

Issue: Printing results in a single page feed only.

Resolution: Cannot be corrected in current version of MapInfo Professional.

To print within this limitation, we suggest that you either reduce the output resolution or the image size to decrease number of pixels.

In some print drivers, you may see the output resolution referred to as "output quality". In this case, select a lower print quality such as "Draft" to lower the output resolution.

Use this formula:

`Dots per Inch x Size in inches = Number of pixels`

Memory Loss in Large-Format Layers with HP Designjet Plotters

Operating System: Windows 2000

Printers/Plotters: HP Designjet Series

MapInfo Professional Versions: 6.0, 6.5, 7.0+

Issue: If you are printing large-format layouts (ANSI E 34 x 44 inches) that contain complex raster (transparent / translucent) and vector layers, it is likely that you have encountered memory loss or errors.

Resolution: The following print configuration may correct the problem:

Try reducing the page size to ANSI C (17 x 22) or smaller. Once you resize the layout frame objects to fit the smaller page size, go to the Print dialog box and click the **Options** button to display the Print Options dialog box. Click the **Fit to this Page:** button and reselect the ANSI E (34 x 44 inches) option.

CAUTION: Use this solution as a last resort only because it could affect the clarity of your image!

Print output repeats itself every 2 to 4 cm using the HP 500, 800, 5000 Designjet plotter when printing Rasters

We have two suggestions to working around this problem. First, try spooling the printer locally either from the driver level or the printer level.



You must have read/write rights to your printer and printer driver to resolve this issue.

To work around this problem, there is an advanced hidden setting that you can change within the properties of the driver. To prevent the printer from repeating itself every 2-4 cm. when printing rasters with vector overlays:

1. Locate the printer driver's properties in the **Control Panel**. To get to this setting, right-click the printer icon and choose **Properties**.
2. Click the **Advanced** tab. Select the following options:
 - Select the **Avoid out of memory** option.
 - If you are using the Windows 2000 or XP operating system, select a scaling factor of 100%.
3. From this dialog box, click the **Printing Defaults** button.
4. In this dialog box, select the **About** button. The About <Driver Name> dialog box displays.
5. Holding down the **F8** key on your keyboard, click the **OK** button. The Special Options dialog box displays:
6. Do one of the following and click **OK**:
 - If printing from Windows 98, *clear* the **Enable RenderSmart** check box.
 - If printing from Windows 2000 or XP, *clear* the **Enable SpoolSmart** check box.

CAUTION: When you modify settings in this driver option box, make sure to note the original settings in case you need to change them back. These were designed for HP Support Engineers and not for general public use.

You can save these settings as a Quick Set to ensure that they run every time you print raster files.

1. Choose **Start > Settings/Control Panel > Printers**.
2. Right-click the appropriate plotter driver icon and choose **Printing Preferences**.
3. Set the preferences the way you want them in the hidden menu.
4. In the **Quick Sets** box, type a name for the selected settings (for example, "Raster Print Settings") and click **Save**. All current driver settings (paper type, hidden menu settings, etc.) are saved under the Quick Set name. The printer driver remembers these settings and they can be used for future print jobs.

To print a raster map later with the same settings:

1. Choose **File > Print** to display the Print dialog box.
2. Choose the **Properties** button. The Properties dialog box displays.
3. Make sure the name you entered (as in "Raster Print Settings" in our example) displays in the Quick Sets drop-down list and click **OK**. The Print dialog box redisplay.
4. Click **OK** to print.



If you do not need this special setting in Quick Sets, remember to change this setting back to the default machine setting.

Cannot Print with HP Designjet Printers (Driver 5.31 or 5.32).

When you attempt to use this driver one of these things happens:

- If you select the **Maximum Performance** option, you get memory error messages and the printer prints only part of the image

- If you select the Avoid out of memory option, the computer crashes and displays both an Out of Hard Disk Space message and an Out of Virtual Memory message

The resolution of this issue is similar to the preceding issue. The dialog box is the same.

To resolve this issue:

1. Choose **File > Print** to display the Print dialog box.
2. Click the **Advanced** button at the bottom of this dialog box. The Advanced Printing Options dialog box displays.
3. Select these options and click **OK**:
 - **Print directly to the printer**
 - **Internal Handling for Transparent Vector Fills and Symbols**
 - **Use ROP Method to Display Transparent Raster**
 - **Print Raster in True Color When Possible**
 - **Select the Half Tone dither method.**
4. From the **Control Panel**, select **Printers** or **Printers and Faxes** and find the printer you want to print from.
5. Right-click the printer you want to print to and select the **Properties** option. The Properties dialog box displays.
6. Click the **About** button to display the About <Printer Driver> dialog box.
7. Holding down the **F8** key on your keyboard, click the **OK** button. The Special Options dialog box displays.
8. Do one of the following:
 - If printing from Windows 98, clear the **Enable RenderSmart** check box.
 - If printing from Windows 2000 or XP, clear the **Enable SpoolSmart** check box.

Printing Maps Larger than 1.6 Meters (63 Inches)

When you print a map that is larger than 1.6 meters or 63 inches in Normal or Best modes, often the image is incomplete. Only the first 1.6 m or 63" prints.

To resolve this issue, do one of the following:

- Click the **Advanced** button and in the **Print Quality** options, select a lower print resolution (from 600 to 300 DPI or from 300 to 150 DPI)
- Set the **Scale to fit** option to **100%** to divide the resolution rendering by 2

When you use one of these alternatives you can print up to 3.2 meters (10.5 feet) at 300 DPI or up to 6.4 meters (21 feet) at 150 DPI.

Enhancements Added in Earlier Versions

MapInfo Professional 10.0

MapInfo Professional lets you save a map to a layered PDF file, see [Printing to a Layered PDF File on page 5](#)

MapInfo Professional 9.5.1

MapInfo Professional provides enhanced rendering capabilities in this release, including:

- translucency of vector objects (map features, labels, themes, text, and layout objects)
- smoothing (anti-aliasing) of text, vector and images
- new drawing selection method
- new export formats: EMF+ and EMF+Dual
- use of offscreen bitmaps to draw layouts
- printing improvements

Enhanced rendering is possible through Microsoft's GDI+, an operating system level capability that provides two-dimensional vector graphics, imaging, and typography handling. GDI+ improves on standard Windows Graphics Device Interface (GDI) by adding new features and optimizing existing features.

Enhanced rendering in MapInfo Professional allows you to create translucent labels, themes, and layers, as well as apply anti-aliasing to smooth the jagged edges of text, labels, lines, curves, region borders and raster images. We also provide a new way of drawing selections and two new export formats as a result of using the new enhanced rendering support.

Enhanced rendering covers the following topics:

- [Enabling Enhanced Rendering](#)
- [Enhancing Selection Drawing Style](#)
- [Workspaces](#)
- [Translucency](#)
- [Anti-Aliasing](#)
- [EMF+ and EMF+Dual Export Formats](#)
- [Layout Drawing Improvements](#)
- [PrintOSBM Registry Setting](#)

Enabling Enhanced Rendering

To take advantage of enhanced rendering in MapInfo Professional, you must turn on the capability. If you do not turn on enhanced rendering, rendering is performed using the standard Windows Graphics Device Interface (GDI).

Enhanced rendering does not mean that translucency and anti-aliasing are automatically applied. Translucency and anti-alias settings must also be applied to generate the best looking maps. You will, however, automatically have the improved selection drawing style (see [Enhancing Selection Drawing Style on page 14](#)). Translucency and Anti-Aliasing are discussed under [Translucency on page 15](#) and [Anti-Aliasing on page 17](#), respectively.

Enhanced rendering is supported for Map, Browser and Layout windows. Enhanced rendering is not available for other types of windows.

To enable enhanced rendering, set it in the Options dialog for the Map (from the **Map** menu, select **Options**), Browser or Layout windows, or through a MapBasic statement. It is controlled on a per window basis.

Legends are drawn in the same mode as the associated Map window. So, if a map is in enhanced rendering mode, its legend is as well. There are no enhanced rendering options in the Legend Options dialog.

Like the Map and Browser windows, enhanced rendering for Layout windows is enabled in its Options dialog. This means that any annotations added to the layout, such as titles or watermarks will be drawn using enhanced rendering. If you add Map and Browser windows that already are enabled for enhanced rendering, enhanced rendering will be forced on for the Layout window. Enhanced rendering for the Map and Browser windows have no affect on the Layout window, and vice versa. For more information, see [Translucency for Layout Windows on page 16](#).

There is also a style preference to determine the initial enhanced rendering state for newly created windows. See [Enabling Enhanced Rendering for New Windows on page 14](#).



MapInfo Professional 9.5 opens a workspace with enhanced rendering, but ignores the enhanced rendering settings. Versions of MapInfo Professional prior to 9.5 cannot open a workspace with enhanced rendering. See [Workspaces on page 15](#).

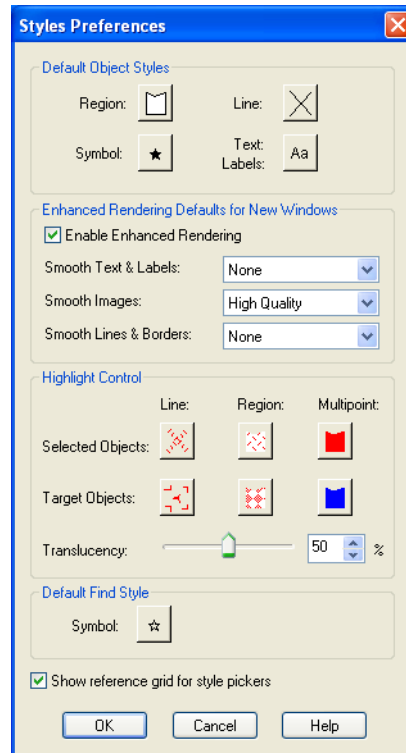
Enabling Enhanced Rendering for New Windows

MapInfo Professional provides a Style preference to determine the default state of enhanced rendering for newly created Map, Browser and Layout windows. Each window can be changed independently at a later time. This preference is disabled by default to maintain backwards compatibility with earlier versions of MapInfo Professional.

i These preferences control the state of new windows, not existing windows. This means if you are opening old workspaces, they will open with enhanced rendering disabled, regardless of how the Style preference is set.

To set enhanced rendering as a default style preference:

1. On the **Options** menu, point to **Preferences** and click **Styles** to display the Styles Preferences dialog box.
2. Select the **Enable Enhanced Rendering** checkbox and make your selections from the drop-down lists.

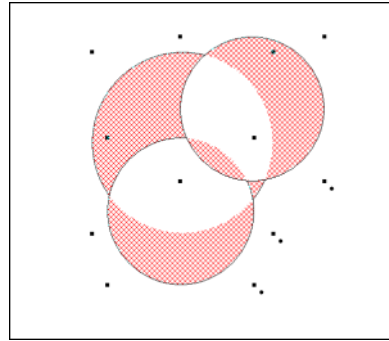


Enhancing Selection Drawing Style

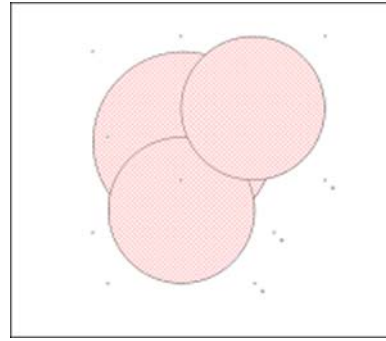
MapInfo Professional offers a selection drawing style that uses translucency through enhanced rendering. This requires that the window is enabled for enhanced rendering, see [Enabling Enhanced Rendering for New Windows on page 14](#). This style method is useful when you need to select map objects, such as points or regions, where they overlap or appear to draw on top of one another when you zoom out.

To control the translucency setting for the selection style, go to the Styles Preference dialog. The slider is located in the Highlight Control group for that dialog.

If enhanced rendering is turned off, selections are drawn using an older selection method. This method, under certain situations, causes overlapping objects to appear unselected.



Enhanced Rendering Turned Off



Enhanced Rendering Turned On

i A particular selection style may not look ideal in either mode. You will have experiment with the settings.

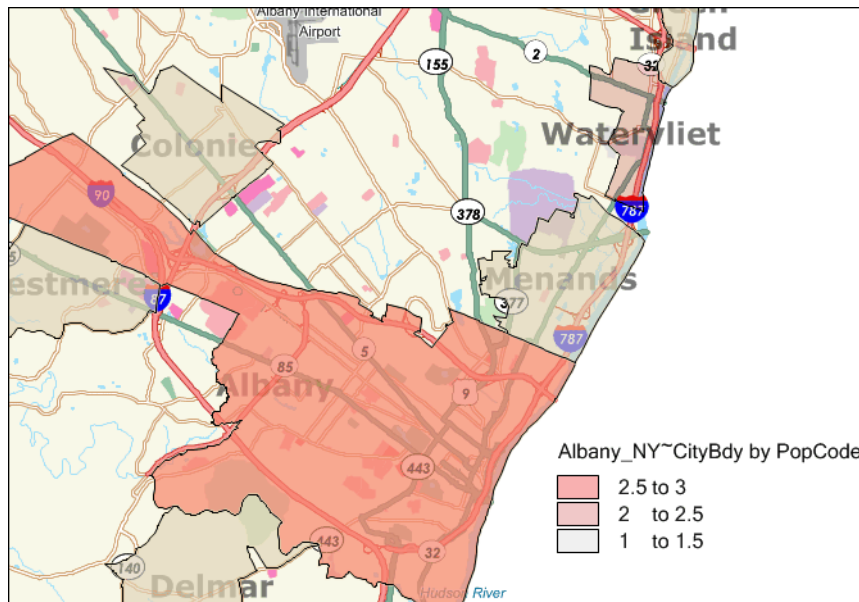
Workspaces

If you open a workspace that does not have enhanced rendering enabled and you wish to use the translucency and anti-aliasing features, you must enable it on a per window basis using the Options dialog for the Map, Browser or Layout window.

i Workspaces with enhanced rendering enabled can only be opened in MapInfo Professional 9.5 or later. Enhanced rendering must be disabled to open a workspace in an earlier version of MapInfo Professional.

Translucency

One key capability of enhanced rendering is the ability to apply translucency to a map layer so that the layer underneath is partially visible. This feature can be a very powerful analytical tool. For example, translucency on a ranged theme provides two levels of information in a single view—the distribution of data that matches some criteria, and the view below the ranged theme that offers a reference map to that data.



MapInfo Professional supports translucency for a wide variety of layer types, including vector objects, labels, themes, raster and grid images, and annotations (cosmetic layer and graphic objects added to layouts).

Translucent Layers

Translucency is controlled on a per layer basis. Each layer has its own translucency setting. Translucency for map layers and themes is set in Layer Control using a slider control on the Display Options dialog. Translucency for labels is set in the Label Options dialog. All objects in the same layer are drawn at the same translucency level. Labels, themes and map objects in the same layer have independent translucency settings. You can have multiple translucent layers in a Map window, each with its own translucency value.

In order to use translucency in a Map or Layout window, you must enable enhanced rendering in the appropriate window's Options dialog. Enhanced rendering can also be set as a Style preference for new windows you create.

Keep in mind, when translucency is on (value > 0 percent), enhanced rendering is automatically enabled. However, the reverse is not true. If translucency is turned off (value = 0 percent), enhanced rendering will not be turned off. You can turn it off manually, if desired, by clearing the Enable Enhanced Rendering checkbox in the Options dialog.



There is a shortcut to enabling enhanced rendering if you are already in the Display Options or Label Options dialogs. You can enable it by setting a translucency value of greater than 0. This saves you from returning to the Map or Layout window Options dialog to enable it.

Translucency is also available for the Cosmetic Layer. Set translucency for the Cosmetic Layer just like you would for another layer type, in Layer Control's Display Options dialog. The translucency setting will be applied to the entire Cosmetic Layer.

Translucency for Layout Windows

Layout windows provide two levels of enhanced rendering:

- Annotation-level enhanced rendering for graphic objects, such as titles or watermarks.
- Window-level enhanced rendering for the Maps, Legends and Browsers.

To set enhanced rendering for layout annotations for an already created layout, go to Layout > Options and check the **Enable Enhanced Rendering** checkbox. You can also set smoothing settings here as well. If you have yet to create the Layout, you can enable enhanced rendering as a preference for newly created windows (Options> Preferences > Styles).

To set enhanced rendering for Map and Browser windows that you wish to display in a Layout window, go to the appropriate window Options dialog (Map or Browser) and check the **Enable Enhanced Rendering** checkbox. Adding these windows to the layout and enhanced rendering will continue for these windows. To disable enhanced rendering for these frames, return to the appropriate Options dialog and clear the checkbox.

Embedding a Map or Browser window with enhanced rendering on in a Layout window will also force enhanced rendering on for the layout. This can be seen in Layout > Options dialog when the Enhanced Rendering checkbox is checked, but the control is disabled, preventing you from turning it off.

Adjusting Translucency in a Layout

Translucency for annotations in a layout is controlled by a translucency slider in the Options dialog for Layout windows.

To adjust the translucency of annotations in a Layout window go to Layout > Options and change the value on the translucent slider. All annotations in the Layout window will be treated with the same translucency setting. Annotations are objects you can add to a layout by using, for example, the Add Symbol, Line, Polyline, Text, toolbar options.

To adjust the translucency for Map windows in a layout, you must return to its Map window and access the Options dialog to reach the translucency slider.

i Translucency for annotation objects does not affect the translucency of Maps in layout frames. The contents of frames are drawn using that window's translucency settings. They are not drawn using the Layout window translucency setting. The translucency slider on the Layout Options dialog does not control the translucency of the maps.

Translucent Raster and Grid Images

Translucency for raster and grid images has been available in MapInfo Professional prior to this release. The new aspect of image translucency is the added support through enhanced rendering. These images can be drawn translucently with or without enhanced rendering enabled.

The advantage of using enhanced rendering is seen when a translucent raster or grid image is printed. Enhanced rendering enabled forces MapInfo Professional to print to offscreen bitmaps, which typically yields better looking results than if printed without enhanced rendering.

For raster images, there is no change to how you set translucency through the user interface or via MapBasic commands. Set the translucency in the Adjust Image Styles dialog (Layer Control > Display Options > Style Override > Adjust Image Styles).

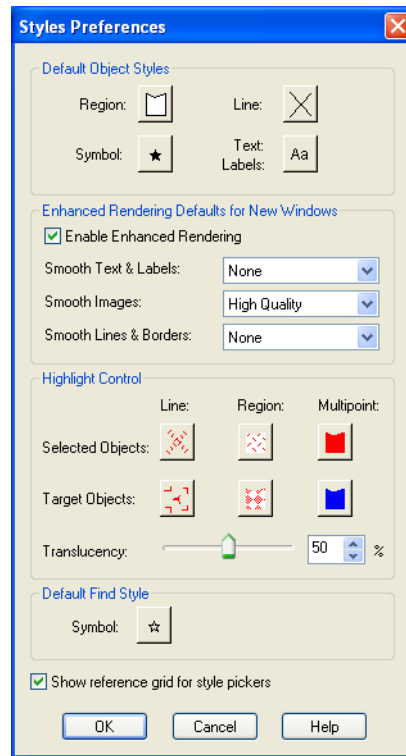
Raster display options can also be controlled on a per table basis so that the image will open using those particular settings by default. These are found in Table > Raster > Adjust Image Styles.

For grid images, the translucency slider is an option in the Grid Appearance dialog. This dialog is reachable from the Styles button in the Create Thematic Map Step 3 of 3 or the Modify Thematic Map dialogs.

Anti-Aliasing

One aspect of enhanced rendering is the ability to employ an anti-aliasing process that removes the jagged edges of text, labels, images, and vector lines and borders. Enabling enhanced rendering does not automatically enable anti-aliasing (smoothing options are set to None by default). You must set it in Style Preferences for the default state of newly created windows, or in the Options dialogs for individual Map, Browser and Layout windows.

To open the Style Preferences dialog, on the **Options** menu, point to **Preferences** and click **Styles**.



To remove the appearance of jagged characters in horizontal and rotated labels and on custom text objects in the window, select the **Enable Enhanced Rendering** checkbox and choose **Anti-Alias** from the **Smooth Text & Labels** drop-down list. Smoothed text and labels look better on your map, but because these objects require more rendering, it may take longer to display your map.

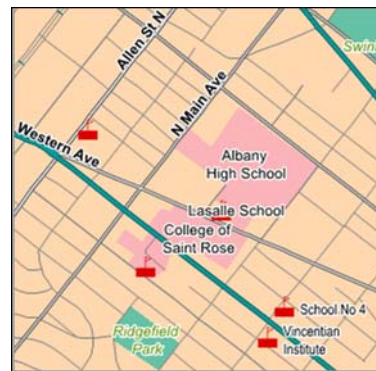
If you wish to smooth raster and grid images in your window, you can set the quality of the resolution. Low Quality indicates there will be some image smoothing, but not at the expense of rendering performance. High Quality means that you want the highest amount of smoothing MapInfo Professional can provide. This will cause your map to draw more slowly than the Low Quality option.

The third anti-alias setting applies to lines and borders. The following illustration shows the before and after affects of anti-aliasing applied to the roads and labels in the Map window.

Enhanced Rendering Off



**Enhanced Rendering On,
with smoothing options**

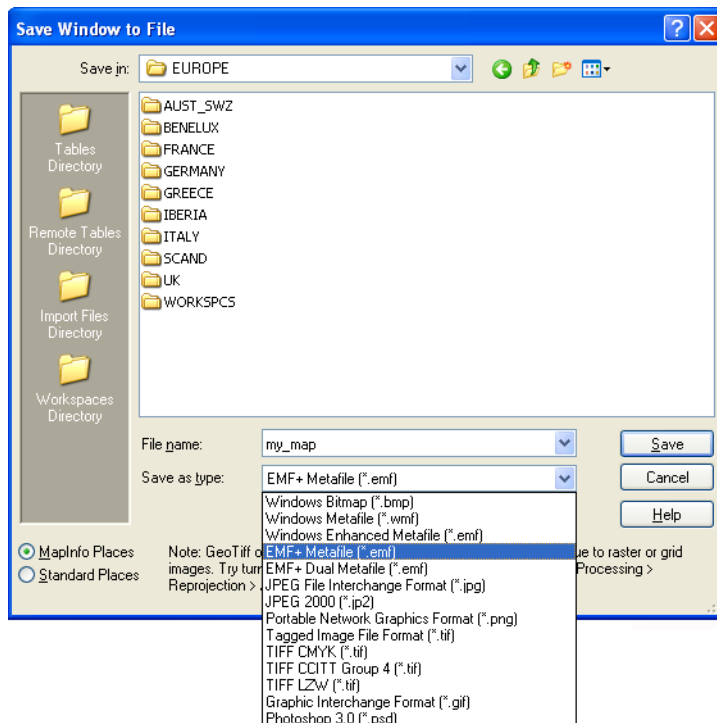


EMF+ and EMF+Dual Export Formats

In order to take full advantage of enhanced rendering, MapInfo Professional provides EMF+ and EMF+Dual image export formats. These are enhanced metafile vector image formats that support Windows GDI+ (Graphics Device Interface). Use these to save translucent maps instead of exporting to the older metafile formats, such as EMF and WMF. Older formats do not support translucency very well, which display images using translucency with a dithered, or speckled, appearance.

Choose EMF+ if you expect to bring your maps into an application that supports EMF+, such as Microsoft Office 2007. Choose EMF+Dual (a combination of EMF and EMF+) if your maps may be used in applications that may or may not support EMF+, such as Microsoft's Office 2003 and Office 2007.

-
- i** EMF+Dual format will produce a larger file than EMF+. But it provides better compatibility with older application that do not support EMF+.
-



Layout Drawing Improvements

Beginning with this release, MapInfo Professional now prepares a layout for display by rasterizing the contents to an offscreen bitmap, and displaying the entire layout once the bitmap is drawn. You will no longer see a partial display of the Layout window. The drawing is done offscreen and is presented to you when it is completely drawn.

This behavior applies to layout displays with or without enhanced rendering enabled.

PrintOSBM Registry Setting

This registry setting controls a new printing method that renders a print job to offscreen bitmaps prior to sending it to the printer or plotter. This is used when printing maps and layouts containing translucency and/or anti-alias content.

For instructions to set PrintOSBM, see [Printing Maps with Translucency and Anti-Alias Smoothing on page 20](#).

MapInfo Professional 9.5

PolygonMode

This release of MapInfo Professional introduces a new way of drawing complicated polygons, such as those containing holes or many nodes. This was due to an issue with printing such objects using an Adobe PDF printer driver. It left visible seams and gaps in the image when the PDF was printed. These seams and gaps were not visible on screen nor when printed using other printer drivers.

Printing with the new method means that large polygons are now rendered as-is not broken into smaller polygons, as the older method does. Additionally, the new method uses different calls that specifically support drawing polygons with holes. The older method manipulates the polygon with holes to draw as a single polygon. This is what caused seams and gaps to appear in the PDF

Because this issue does not affect all users of MapInfo Professional who print maps, we continue to provide the original polygon drawing method. You can control which method to use by changing the registry setting PolygonMode=1 (default, renders using the new method), to PolygonMode=0 for the old method. This setting is located in the system registry under HKEY_LOCAL_MACHINE\SOFTWARE\MapInfo\MapInfo\Common.

PrintOSBM

This registry setting controls a new printing method that renders a print job to offscreen bitmaps prior to sending it to the printer or plotter. This is used when printing maps and layouts containing translucency and/or anti-alias content. For details, see [Printing Maps with Translucency and Anti-Alias Smoothing](#).

Printing Maps with Translucency and Anti-Alias Smoothing

MapInfo Professional provides a new printing method for maps and layouts containing translucent content and anti-alias settings. This method renders the map or layout “behind the scenes” to an offscreen bitmap prior to sending it to your printer or plotter. The use of offscreen bitmaps is invoked depending on the type of translucent content in the map and the enhanced rendering state of the window, as follows:

- Invoked when your map or layout contains translucent vectors (e.g., map layers, themes, or labels) and enhanced rendering has been enabled.
- Invoked if your map contains images with either High or Low Quality smoothing enabled.
- Invoked for translucent raster and grid images provided enhanced rendering is enabled.

You cannot control this print method through the Print dialog, as you can with Direct to Device or Print to EMF. This is a registry setting called PrintOSBM, located under HKEY_LOCAL_MACHINE\SOFTWARE\MapInfo\MapInfo\Common. The values are dword:00000000 (auto) and dword:00000001 (forced on). Auto, the default, means that printing will use offscreen bitmaps only for the translucency and anti-alias conditions listed above. Forced on means printing will use offscreen bitmaps regardless of the translucency and anti-alias settings.

For translucent raster and grid images, you can also print using EMF when enhanced rendering is not enabled.



Direct printing to a printer or plotter does not support translucency.

Enabling the PrintOSBM Option Using Registration Files

To edit the registry, you will need Administrator privileges. If you do not have the required privileges, then ask your System Administrator to assist you.


To enable the PrintOSBM option using registration files in the Knowledge Base document:

1. Go to the MapInfo Knowledge Base entry **MapInfo Professional > Registry Settings > Enabling the PrintOSBM option**:

<http://testdrive.mapinfo.com/TechSupp/MIPProd.nsf/2fa3e3416d06d61d85257125006b2533/b769a029109299ab8525754c00591ec9?OpenDocument>

 If you do not have Internet access, see [Enabling the PrintOSBM Option Manually](#) for instructions.


2. Save the **Print_OSBM_ON.reg** and **Print_OSBM_auto.reg** files locally. Use Windows Explorer to navigate to the registration files.

 We recommend you create a permanent directory in case you need to remove the registration option later.

3. Double-click the **Print_OSBM_ON.reg** icon to add the new key to the registry. This option takes effect the next time you open MapInfo Professional.

Disabling the PrintOSBM Option Using Registration Files

If you try this option and you want to remove this functionality, you can disable the registry entry by following these instructions.

 We assume that you have downloaded the registry files by following the instructions in [Enabling the PrintOSBM Option Using Registration Files](#).

To disable the PrintOSBM option using the downloaded registration file:

1. Go to the directory that contains the registration (.reg) files you downloaded earlier.
2. To remove the PrintOSBM option, double-click the **Print_OSBM_auto.reg** icon. The registry entry is updated with the new value. This option takes effect the next time you open MapInfo Professional.

Enabling the PrintOSBM Option Manually

If you do not have access to the Internet, or you want to add this option manually, follow these instructions.

Before modifying the registry, make a backup:

1. Choose **Start > Run** and type the command **regedit**. Click **OK** to display the Registry Editor window.
2. In the HKEY_LOCAL_MACHINE entry, navigate to **Software > MapInfo > MapInfo > Common**.
3. Highlight the **Common** folder and then select **File > Export**.
4. In the Export Registry File dialog, specify a location and file name to backup to and then click **Save**.

To enable the PrintOSBM Print option by entering the registration key manually:

1. From the **Edit** menu, select **New > DWORD Value**. A new entry displays in the list.
2. Right-click the entry and select **Rename**. Rename the new entry **PrintOSBM** and press **Enter**.
3. Double-click the new entry to display the Edit DWORD Value dialog box.
4. To enable the PrintOSBM option, type **1** in the **Value** data field and click **OK**. This forces printing to use off-screen bitmaps regardless of the translucency and anti-alias settings.

To disable this option, return to this dialog box, type **0** in the Value data field and click **OK**. This causes printing to use off-screen bitmaps only for the translucency and anti-alias conditions.


This option takes effect the next time you open MapInfo Professional.

 You can also remove this regedit entry entirely to remove this option.

EMF+ and EMF+Dual Export Formats

In order to take full advantage of enhanced rendering, MapInfo Professional provides two new image export formats: EMF+ and EMF+Dual. These are enhanced metafile vector image formats that support GDI+. Use these to save translucent maps instead of exporting to the older metafile formats (EMF and WMF). Older formats do not support translucency very well, which display images using translucency with a dithered, or speckled, appearance.

Choose EMF+ if you expect to bring your maps into an application that supports EMF+, such as Microsoft Office 2007. Choose EMF+Dual (a combination of EMF and EMF+) if your maps may be used in applications that may or may not support EMF+, such as Microsoft's Office 2003 and Office 2007.

 EMF+Dual format will produce a larger file than EMF+. But it provides better compatibility with older application that do not support EMF+.

MapInfo Professional Printing Guide Available in Help

Over the years, users have told us that the MapInfo Professional *Printing Guide* helps them print large or complex maps or layouts. You can now access the MapInfo Professional Printing Guide, which contains printing tips and tricks from our Quality Assurance department, in the Help System.

To access the Printing Guide in the Help System, choose **Help > MapInfo Professional Help Topics > Productivity Aids > MapInfo Professional 9.5 Printing Guide**.

MapInfo Professional 9.0

Printing Large and Complex Output

If you have seen the **Cannot Print** error message when printing, you may be trying to print one or more of the following:


- Large format (large page size) maps or layouts containing raster or grid layers that may be translucent or transparent
In this case, many times the maps or layouts did not print at all, or if they did print, the translucent or transparent layers did not print properly.
- Maps made up of multiple pages that contain borders
In this case multiple page maps with a border around the entire map would print with borders around each page instead.
- Maps that contained labels that span more than one page
In this case, the labels would not print at all or would not print properly.

Largely, these issues were caused by the demand these print requests placed on the system resources in your computer.

To resolve these issues we now offer an option that breaks down a print request into smaller blocks, which reduces the demand on your system's resources. Each block is sent individually to the printer driver. This change may allow you to print large and complex images that you could not print in the past. We call this feature Subdivide Print. We limit the size of each block to 8192 x 8192 pixels.

Caveat

During testing we discovered that many printer drivers handled this new option properly. However we found that the output of some printer drivers resulted in gaps that display at the block boundaries. Therefore we did not enable this option by default. Since these gaps may affect the quality of your final output, we are giving you the ability to enable this option if or when you need it. At this time, we do not have a workaround to remove these gaps.

-
-  If you have both a postscript and a non-postscript version of your printer driver, we recommend you try both to see which version gives you better results.
-

Enabling the Subdivided Printing Option

To use this new option, you need to add a registry key to your local machine. We have created an online Knowledge Base document that contains the registration (.reg) files inside a ZIP file that you can use to enable or disable this option automatically. You will need to save the ZIP file locally, open the ZIP file and double-click the appropriate registry file to add this option to the registry. Adding registry keys to your computer requires Administrator rights, or at least write access to your computer's registry. If you do not have this type of access, we recommend you see your System Administrator for instructions.

Enabling the Subdivide Print Option Using Registration Files


To enable the Subdivide Print option using registration files in the Knowledge Base document:

1. Go to the MapInfo Knowledge Base entry **MapInfo Professional > Printing-General Output > Printing Large and Complex Output Improved:**

<http://testdrive.mapinfo.com/TechSupp/MIProd.nsf/2fa3e3416d06d61d85257125006b2533/2f7c21feaff3145285257243005336ab?OpenDocument>

-
-  If you do not have Internet access, see [Enabling the Subdivide Print Option Manually](#) for instructions.
-

2. Open or save the **SubdividePrint.ZIP** file and, using your ZIP utility, save the two registration files locally. Use Windows Explorer to navigate to the registration files.

-
-  We recommend you create a permanent directory in case you need to remove the registration option later.
-

3. Double-click the **SubdividePrint.reg** icon to add the new key to the registry. This option takes effect the next time you open MapInfo Professional.

Disabling the Subdivide Print Option Using Registration Files

If you try this option and you want to remove this functionality, you can disable the registry entry by following these instructions.

-
-  We assume that you have downloaded the ZIP file that contains the registry files by following the instructions in [Enabling the Subdivide Print Option Using Registration Files](#).
-

To disable the Subdivide Print option using the downloaded registration file:

1. Go to the directory that contains the registration (.reg) files you downloaded earlier.
2. To remove the Subdivide Print option, double-click the **UndoSubdividePrint.reg** icon. The registry entry is updated with the new value.

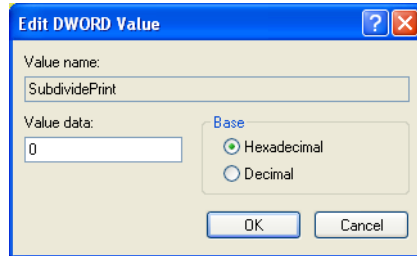
This option takes effect the next time you open MapInfo Professional.

Enabling the Subdivide Print Option Manually

If you do not have access to the Internet, or you want to add this option manually, follow these instructions.

To enable the Subdivide Print option by entering the registration key manually:

1. Choose **Start > Run** and type the command `regedit`. Click **OK** to display the Registry Editor window.
2. In the HKEY_LOCAL_MACHINE entry, navigate to **Software > MapInfo > MapInfo > Common**.
3. From the **Edit** menu, select **New > DWORD Value**. A new entry displays in the list.
4. Right-click the entry and select **Rename**. Rename the new entry **SubdividePrinting** and press **Enter**.
5. Double-click the new entry to display the Edit DWORD Value dialog box.



6. To enable the Subdivide Print option, type 1 in the **Value** data field and click **OK**.
To disable this option, return to this dialog box, type 0 in the Value data field and click **OK**.
This option takes effect the next time you open MapInfo Professional.

 You can also remove this regedit entry entirely to remove this option.

MapInfo Professional 8.5

There is a new anti-aliasing export filter in this version of MapInfo Professional. Anti-aliasing is a fairly common graphics filter operation that can make the jagged lines in your map and label images appear smoother, which may improve their look in a slide show presentation or on the Web. We suggest you experiment with this feature and its settings to see what anti-aliasing combinations work best for your images. Anti-aliasing is most effective when used with map images that contain many curved lines, irregular region areas and text objects.

The benefits of anti-aliasing can include:

- Make your fonts look smoother
- Make jagged edges in maps look rounder
- Can make text can be easier to read (for some) because it looks more like printed type
- Make maps look more visually attractive

The following are enhancements for printing, importing, and exporting in MapInfo Professional 8.5:

[Setting Anti-Aliasing Options for Images](#)


[Setting Font Anti-Aliasing Options For Labels](#)

[Printing Large \(D, E, and A0\) Images Improved](#)

Setting Anti-Aliasing Options for Images

Some customers have asked us to give them more control over the map images when exporting MapInfo Professional maps. This is particularly important when you are saving maps created in MapInfo Professional for use in other Windows-based applications, in particular in slide presentations or for web pages.

We have added the ability to smooth or anti-alias images during the export process. You can use this capability with all types of windows such as Map windows, layouts, legends, and graphs.

 You cannot anti-alias images you are exporting to .EMF or .WMF format, because these are not true raster formats.

There are three smoothing options you can use to customize your raster image:

1. **Smooth using a Filter value.** You can set a flag that selects one of six filters that allow you to choose the direction the filter is applied to the image from.
2. **Smooth using a Mask value.** You can select a value that indicates the size of the area you want to smooth. For example, to create a 3x3 pixel mask value, you would enter a 3 in this field. This would limit the amount of change in the color of the pixels. Typically mask sizes would be 2-3 pixels when exporting at screen resolution. If you are exporting at a higher resolution, a larger mask might be appropriate.
3. **Smooth using a Threshold value.** You can select a threshold value to indicate which pixels to smooth. Each pixel in an image has a value based on its color. The smaller the pixel value, the darker the color. Select this option to smooth all of the pixels above the threshold you enter in this field. When you set this value to 0, MapInfo Professional will smooth all of the pixels.

You must either set a global preference for these anti-aliasing options or set them locally during the export process (using the **Advanced** button).

To set the anti-aliasing preference for exporting images:

1. Choose **Options > Preferences > Output Settings** to display the Output Preferences dialog box.
2. Click the **Exporting** tab to display the anti-aliasing options.
3. To use anti-aliasing automatically, select the **Use Anti-aliasing** check box and select from these options:

Smooth using a Filter value

Choose a filter for the smoothing you want to use. Select from these filters:

- Vertically and Horizontally (Smooths the image vertically and horizontally)
- All Directions (1) (Smooths the image in all directions)
- All Directions (2) (Smooths the image in all directions using a different algorithm)
- Diagonally (Smooths the image diagonally)
- Horizontally (Smooths the image horizontally)
- Vertically (Smooths the image vertically)

Smooth using a Mask value

Choose the pixel size of the mask you want MapInfo Professional to use in this field. For example, to create a 3x3 pixel mask value, you would enter a 3 in this field. This would limit the amount of change in the color of the pixels to the three pixels around the basic pixel.

Smooth using a Threshold value

Select a threshold value to indicate which pixels to smooth. Colors are 0 for black and 255 for white (in an 8 bit image). Entering a low number changes the look of your map by smoothing the darker colors and the lighter colors. Choosing a higher number changes the way the lighter colors display.

To set the anti-aliasing options locally during export:

1. When you have completed your work on a window, select the **File > Save Window As** menu option. The Save Window to File dialog box displays.
2. Type the name and indicate the path of the file you are saving in this dialog box. Click **Save** to continue. The Save Window As dialog box displays.
If you are exporting an EMF or WMF image, the **Use Anti-Aliasing** check box is disabled.
3. Select the **Use Anti-aliasing** check box and do one of the following:
 - Click **Save** to use the anti-aliasing options you selected in the Output Preferences dialog box
 - Click **Advanced** and choose new anti-aliasing options for this particular map. Click **OK** to return to the Save Window As dialog box. Click **Save** to save these settings and the file.



If you do not select the **Use Anti-aliasing** check box, the anti-aliasing options in the Advanced Exporting Options dialog box are disabled.

The next few figures should give you an idea of the types of results you can expect using the different options.

Figure: Anti-Aliasing with Filter Vertical and Horizontal, Mask 2, Threshold 100

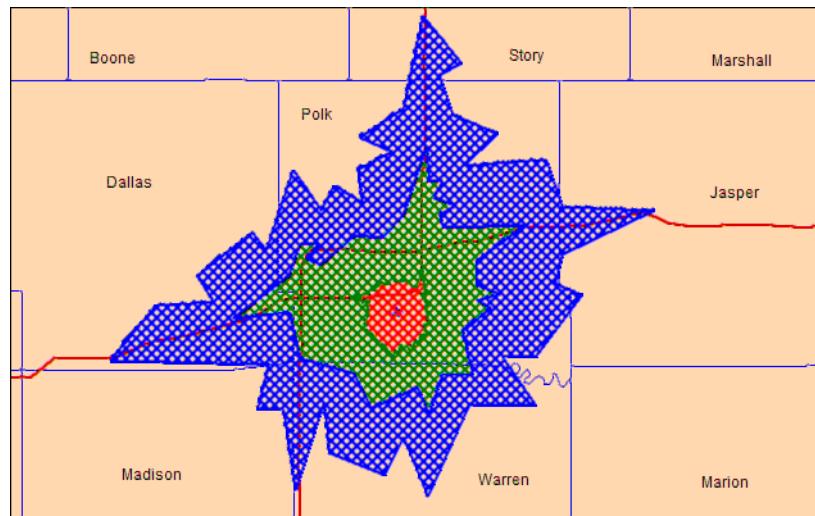
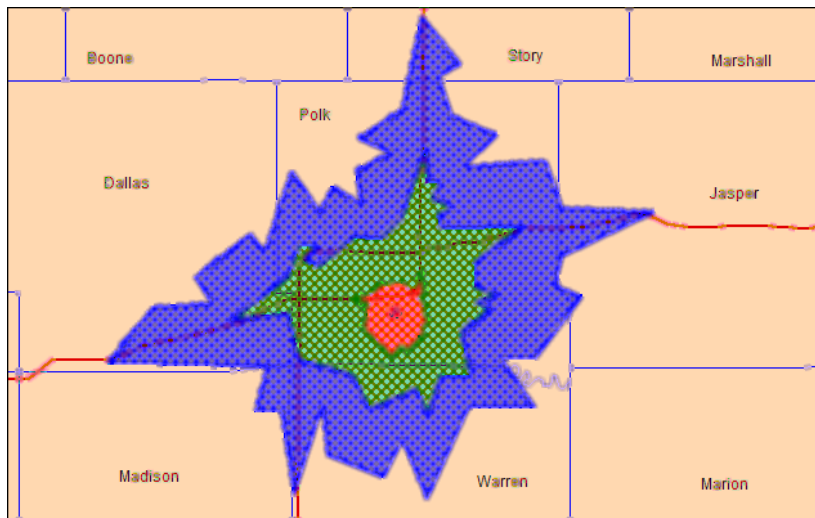


Figure: Anti-Aliasing with Filter Vertical and Horizontal, Mask 5, Threshold 100



Printing Large (D, E, and A0) Images Improved

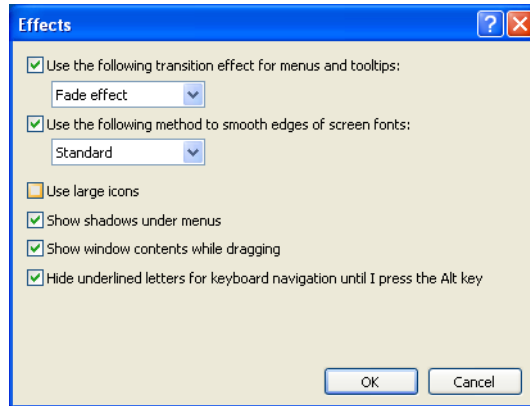
Customers printing large images (such as destination page size D, E, or A0) have reported problems using MapInfo Professional. Some of the printing problems stemmed from a 28,000 pixel limitation that we addressed in MapInfo Professional version 8.5. We have removed this pixel limitation to allow users to print oversized plots that would have exceeded this limit in earlier versions of MapInfo Professional. MapInfo no longer supports the Windows 95, 98, or NT 4 operating systems, which allowed us to remove this restriction.

Setting Font Anti-Aliasing Options For Labels

If you have ever noticed that the edges of your text is jagged and you want to smooth those lines, you can use your system's anti-aliasing options to make this change. If you use the Windows 2003 Server, Windows XP, or Windows 2000 operating systems, you already have the ability to anti-alias your text.

To set up the anti-aliasing capability in Windows XP or Windows 2003 Server:

1. Choose **Start > Control Panel > Display**. Select the **Appearance** tab and click **Effects** to display the Effects dialog box.



*This anti-aliasing option affects the way fonts are rendered on your screen. In Windows 2000 this option is **Smooth edges of screen fonts**.*

2. Select the **Use the following method to smooth edges of screen fonts** check box or the **Smooth edges of screen fonts** check box. Click **OK** to save this preference.

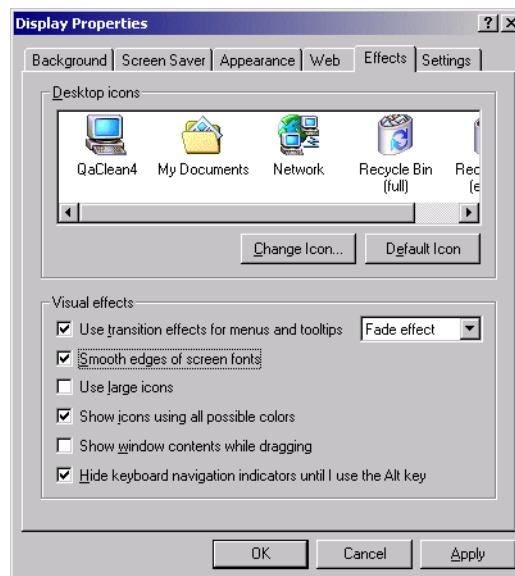
In Windows XP you have two anti-aliasing options, **Standard** and **ClearType**. The option you select in this drop-down list should depend upon the kind of computer monitor you are using.

- Select **Standard** if you are using a standard computer monitor.
- Select **ClearType** for portable computer and other flat screen monitors.

i If you select **ClearType** and you are using a desktop computer monitor, your text may appear slightly blurry.

To set up the anti-aliasing capability in Windows 2000:

1. Choose **Start > Settings > Control Panel > Display > Effects tab** to display the effects options.



2. Select the **Smooth edges of screen fonts** check box. Click **OK** to save this preference.

Improved Control of WMS Image Quality When Printing

To improve your control of the image resolution for WMS map images, we have added the ability to globally and locally set the GetMap request pixel limits in MapInfo Professional. In this case, more pixels means higher resolution, but it also means slower access time. Because WMS servers are not required to specify pixel width and height limits in their capabilities documents, you will have to experiment with the pixel limits of a particular server to get the highest resolution you can. When you send a request that exceeds the server's pixel limit, the server usually issues an error indicating the maximum allowable image size. This will help you adjust the pixel limits for the server.

You can set a Web Services preference to set the pixel limits for all WMS images and you can override these limits by setting the per-server limits on an individual image basis. These options allow you to control the resolution of the WMS maps and limit the size of the maps you receive.

Setting the GetMap Request Pixel Limit Globally

You can set the GetMap request pixel limit globally to affect the resolution of the WMS maps you receive. Remember that increasing the pixel limit also means the retrieval process will take longer, but will produce better quality images.

To set the GetMap request pixel limit globally:

1. Choose **Options > Preferences > Web Services** to display the Web Services Preferences dialog box.
2. Select the options in this dialog box according to your needs.

WMS GetMap Pixel Limits

The **GetMap Pixel Limits** option represents the maximum number of pixels (in width/height) that a map request is limited to. The GetMap request is designed to retrieve the highest resolution map image as is necessary to render the image on the screen, for a printer, or for an export file. This option prevents the request from going higher than the specified values. Different servers have different limits, so you can set the limit that works best for your environment.



You can set per-server defaults for **GetMap Pixel Limits** in the WFS Server Information dialog box.

Unfortunately, servers may not report their limits to us, so if the GetMap request fails, it means that you have entered a value that is too large for that server. Typically, large GetMap requests occur when you are printing or exporting windows containing WMS images. This happens because printing and exporting occurs at larger sizes and/or higher resolutions than on-screen display requires.

Max Width

Max Width specifies the maximum number of pixels for a GetMap request in the X direction.

Max Height

Max Height represents the maximum number of pixels for a GetMap request in the Y direction.

3. When you have completed your selections, click **OK** to save them.



The WMS GetMap Pixel limits listed in the Web Services Preferences dialog box can be overridden on a per server basis in the WMS Server Information dialog box.

Overriding Default GetMap Pixel Limits Locally

You can override the global settings for a particular server if the server's limits are different than the values you set in the Web Services Preferences. If a particular server's limits are higher than the values you selected in the Preferences dialog box, you may want to increase the limits for that server to get higher quality images. If a particular server's limits are lower than the values set in Preferences, you can set lower per-server values locally to prevent errors during the GetMap request.

Remember, the server may not include the limits in its capabilities document so MapInfo Professional cannot help you determine this. You can only find these pixel limits on a trial and error basis.

To override the default pixel limit values for a WMS server:

1. Do one of the following:
 - Click the **Open WMS** button on the Main toolbar
 - From the **File** menu select **Open Web Service > Open WMS**
2. Click the **Servers** button on the Open WMS Table dialog boxes to display the WMS Server Information dialog box.
3. Double-click the server for which you want to change the default values from the list. The WMS Server Information dialog box displays.
4. Select the **Override GetMap Pixel Limits** check box to enter the new overrides (in pixels) for this particular server in the fields that display.
5. Click **OK** to save these values. Then try to retrieve the WMS image you were looking for before.

