

‘AAA-intro.ly’

Introduction

This document shows examples from the [LilyPond Snippet Repository](#).

In the web version of this document, you can click on the file name or figure for each example to see the corresponding input file.

This document is for LilyPond version 2.11.31

`'clip-systems.ly'`

Clipping snippets from a finished score

Notes:

- If system starts and ends are included, they include extents of the System grob, eg. instrument names.
- Grace notes at the end point of the region are not included
- Regions can span multiple systems. In this case, multiple EPS files are generated.

This file needs to be run separately with `-dclip-systems`; the collated-files.html of the regression test does not adequately show the results.

The result will be files named `'base-from-start-to-end[-count].eps'`.



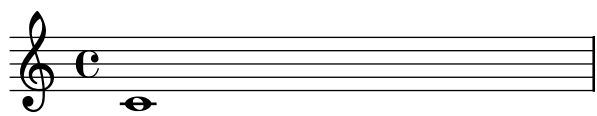
`'toc.ly'`

A table of contents is included using `\markuplines \table-of-contents`. The toc items are added with the `\tocItem` command.

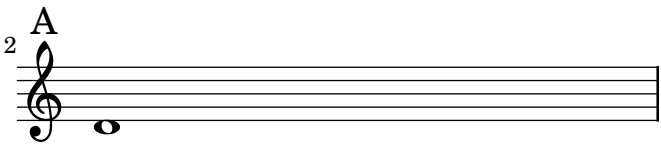
Table of Contents

The first score	2
Mark A	3
The second score	4

2



3



Second score

