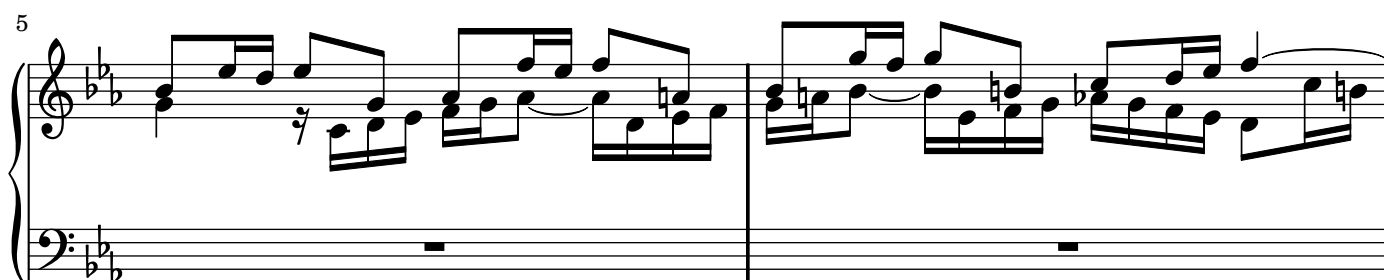
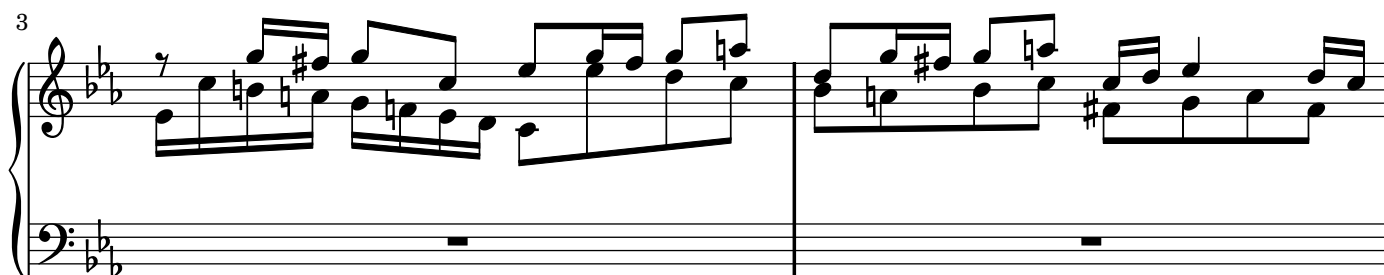


Fuga a 3 voci

Johann Sebastian Bach (1685-1750)

BWV 847



11

Measures 11-13 of a musical score in B-flat major (two flats). The piece is in 4/4 time. Measure 11 features a treble staff with eighth-note chords and a bass staff with a walking bass line. Measure 12 continues the bass line with some rests. Measure 13 shows a more active treble staff with sixteenth-note runs and a steady bass line.

14

Measures 14-15. Measure 14 has a treble staff with eighth-note chords and a bass staff with a walking bass line. Measure 15 features a treble staff with a melodic line containing a sharp (F#) and a bass staff with a walking bass line.

16

Measures 16-17. Measure 16 has a treble staff with eighth-note chords and a bass staff with a walking bass line. Measure 17 features a treble staff with a melodic line containing a sharp (F#) and a bass staff with a walking bass line.

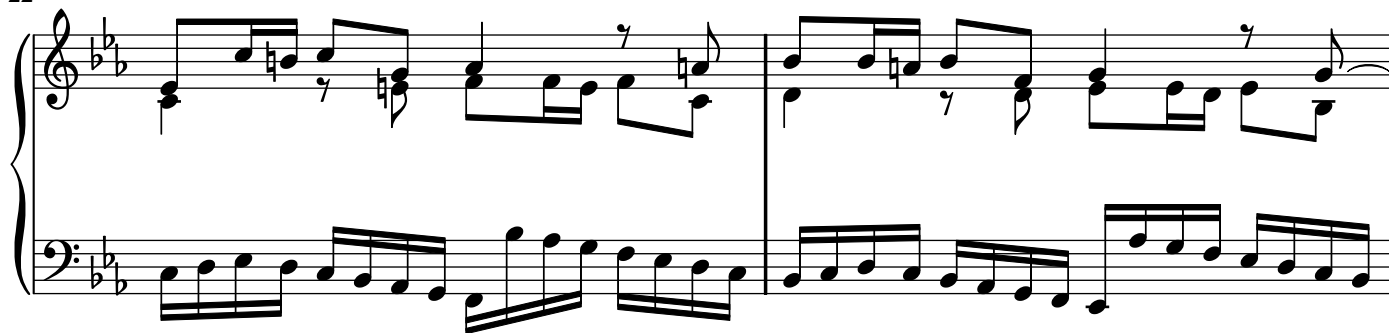
18

Measures 18-19. Measure 18 has a treble staff with eighth-note chords and a bass staff with a walking bass line. Measure 19 features a treble staff with a melodic line containing a sharp (F#) and a bass staff with a walking bass line.

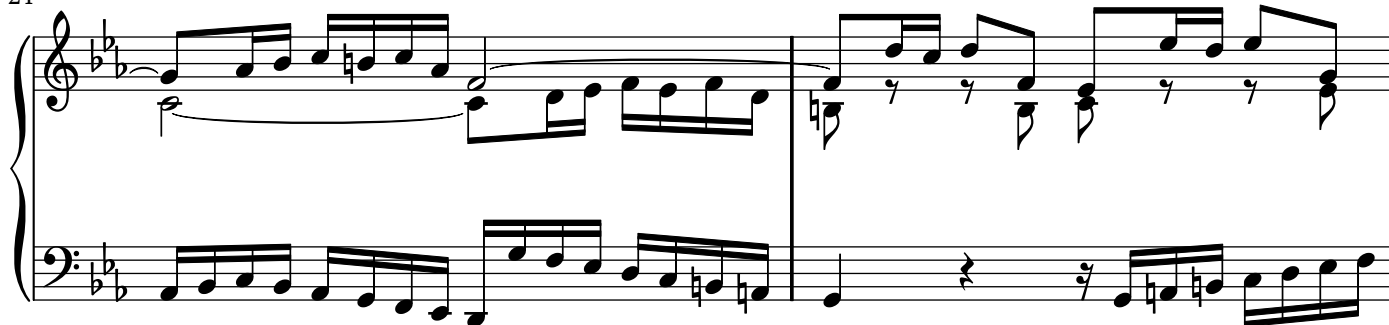
20

Measures 20-21. Measure 20 has a treble staff with eighth-note chords and a bass staff with a walking bass line. Measure 21 features a treble staff with a melodic line containing a sharp (F#) and a bass staff with a walking bass line.

22



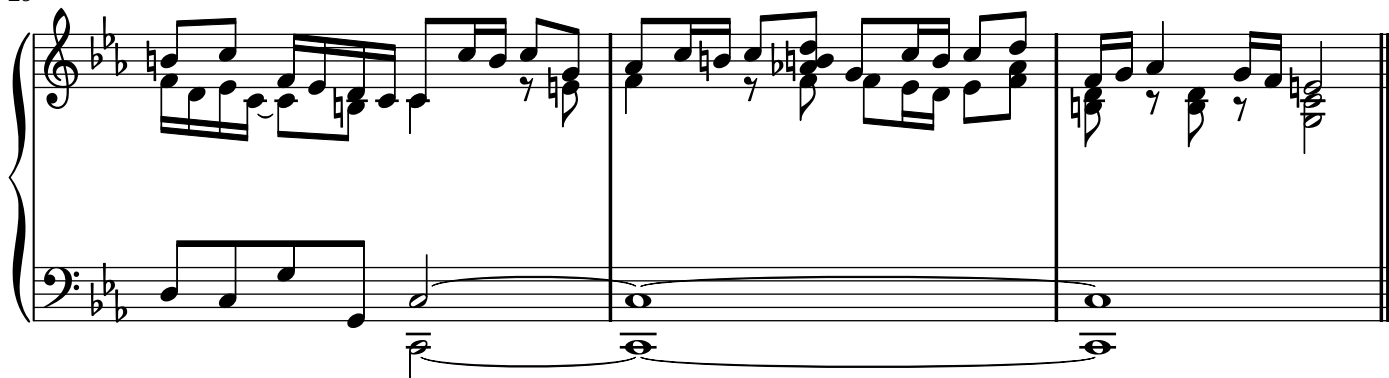
24



26



29



Mutopia-2002/08/19-6

This music is part of the Mutopia project, <http://sca.uwaterloo.ca/Mutopia/>

It has been typeset and placed in the public domain by hanwen@cs.uu.nl.

Unrestricted modification and redistribution is permitted and encouraged. Copy this music and share it!