

‘AAA-intro.ly’

# Introduction

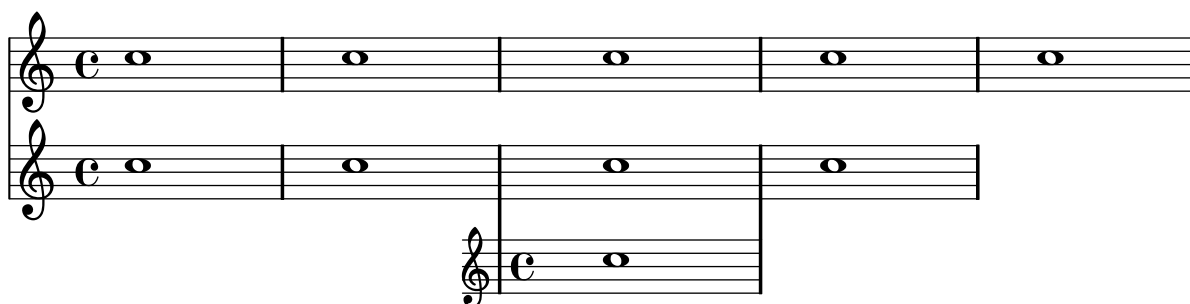
This document shows examples from the [LilyPond Snippet Repository](#).

In the web version of this document, you can click on the file name or figure for each example to see the corresponding input file.

This document is for LilyPond version 2.11.31

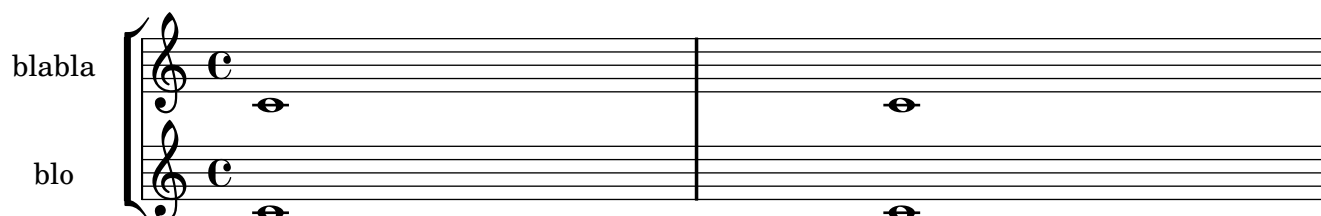
`'adding-an-extra-staff.ly'`

You can add (possibly temporarily) an extra staff after the beginning of a piece.



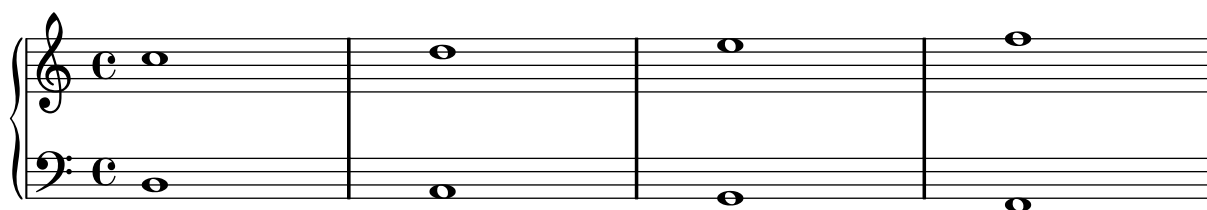
`'aligning-instrument-names.ly'`

Instrument names can be displayed using a `\markup` command; in this case the name is placed inside a padded box, which can help vertical alignment.



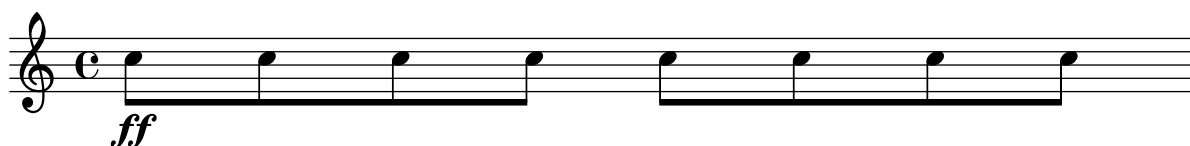
`'changing-the-number-of-lines-in-a-staff.ly'`

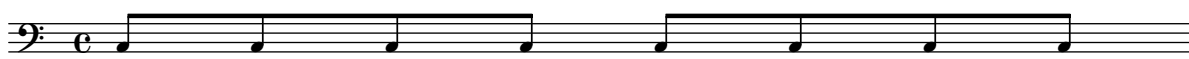
The number of lines in a staff may be changed by overriding `line-count` in the properties of `StaffSymbol`.



`'changing-the-staff-size.ly'`

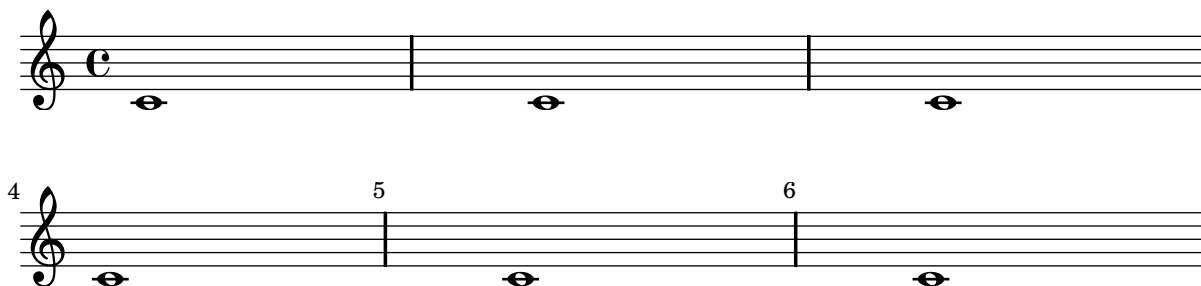
In order to change staff sizes, both `staff-space` and `fontSize` must be scaled.





`‘displaying-bar-numbers-on-all-measures.ly’`

By default, bar numbers are printed only in the first measure. This setting can be overridden, so that bar numbers appear on start of every measure.



`‘how-to-add-text-marks-at-the-end-of-a-line.ly’`

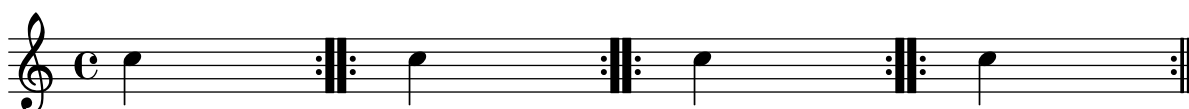
By default, rehearsal marks specified at the end of a line are printed at the beginning of the next line (even if it is the end of the piece, in such case the mark isn’t printed at all).

To avoid this, override the `#’break-visibility` property of the `RehearsalMark` object, like in the following snippet.



`‘inserting-bar-lines-everywhere.ly’`

By setting `barAlways` and `defaultBarType`, barlines may be inserted automatically everywhere.



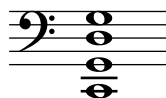
`‘inserting-score-fragments-above-the-staff,-as-markups.ly’`

The `\markup` command is quite versatile. In this snippet, it contains a `\score` bloc instead of texts or marks.

## Solo Cello Suites

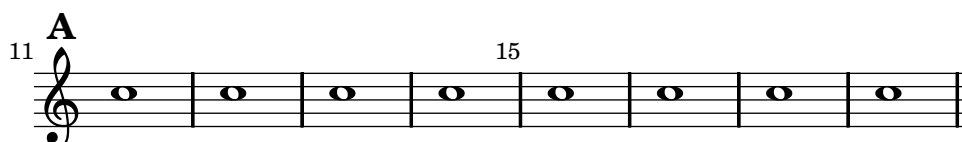
### Suite IV

Originalstimmung:



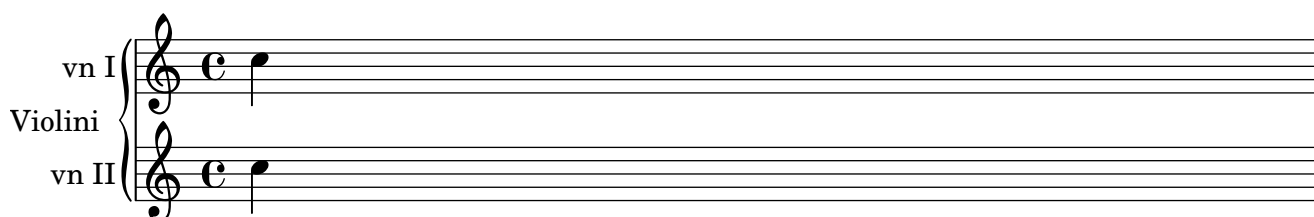
`'making-bar-numbers-appear-at-regular-intervals.ly'`

If you would like the bar numbers to appear at regular intervals, but not starting from measure zero, you can use a context function, `set-bar-number-visibility`, to set automatically `barNumberVisibility`, so that the bar numbers appear at regular intervals, starting from the measure in which `set-bar-number-visibility` is set using `\applycontext`.



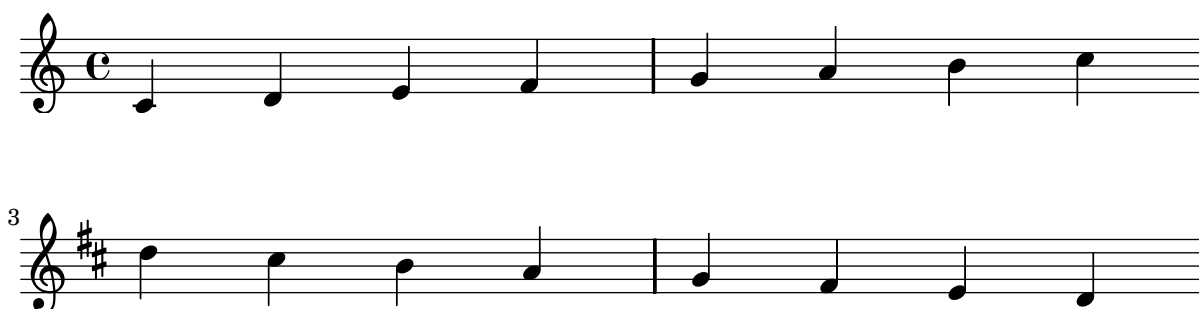
`'naming-a-whole-grandstaff.ly'`

You can have a name for the whole `GrandStaff` in addition to individual `Staffs`.



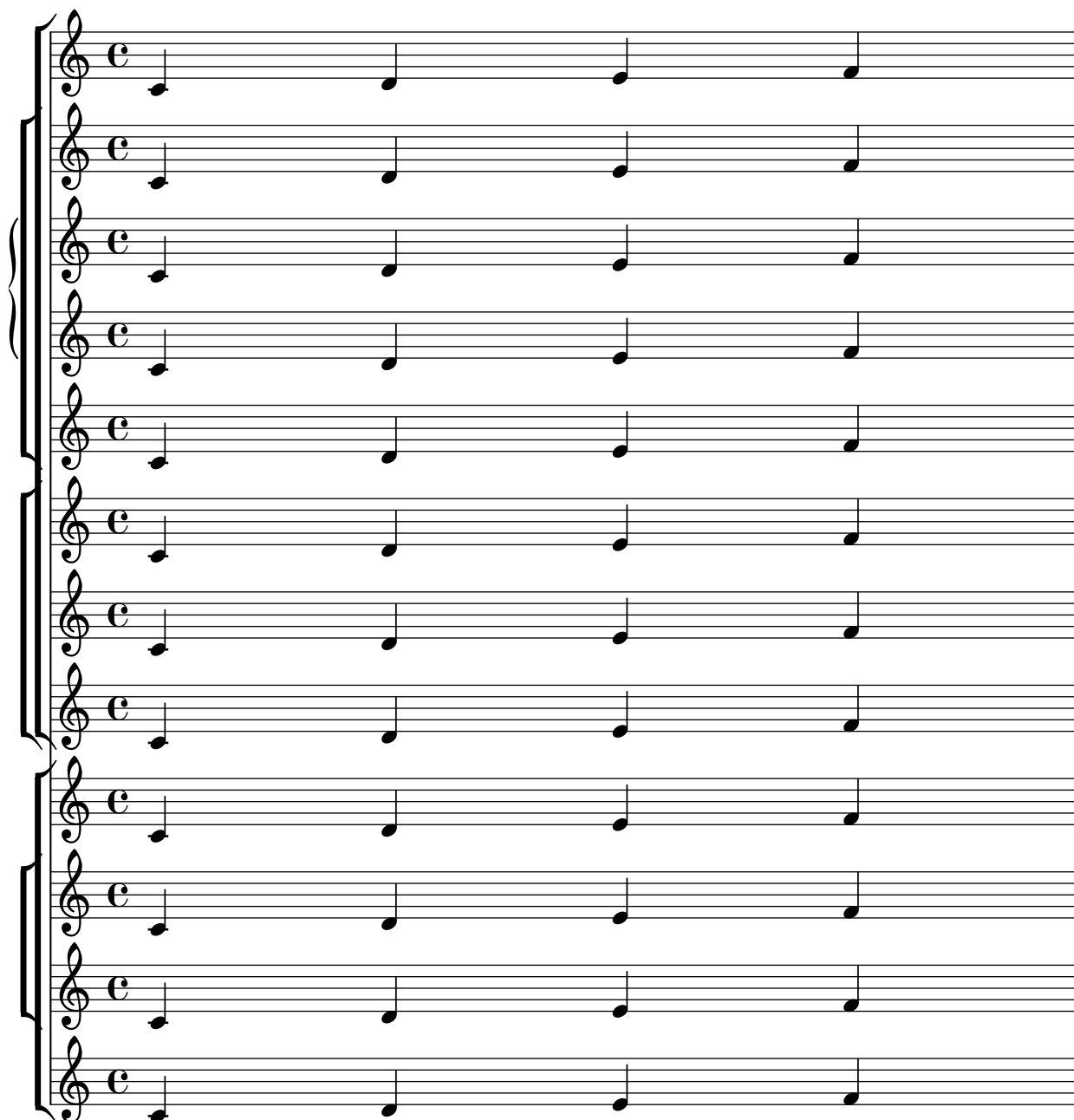
`'removing-the-key-signature-at-the-end-of-a-line.ly'`

According to normal typesetting conventions, LilyPond typesets key changes at the end of the line, when the change appears at a line break. This example shows how to change this default to only print the new key signature at the beginning of the next line.



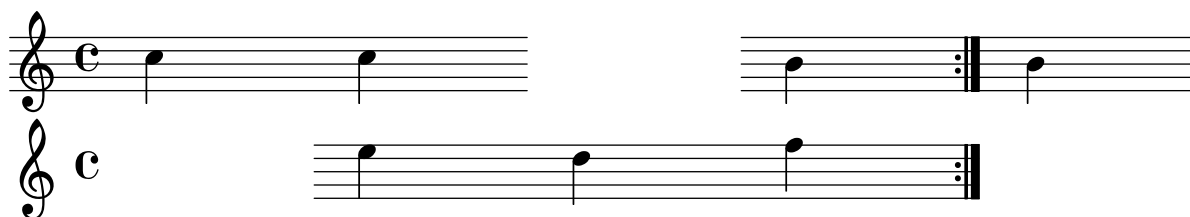
`'staff-brackets.ly'`

Staffs can be nested in various combinations. Here, `StaffGroup` and `ChoirStaff` produce similar straight brackets, whereas `GrandStaff` produces curly brackets. In `InnerStaffGroup` and `InnerChoirStaff`, the brackets are shifted leftwards.



`'staff-containers.ly'`

In this preliminary test of a modern score, the staff lines are washed out temporarily. This is done by making a tuned `StaffContainer`, which `\skips` some notes without printing lines either and creates a `ew Staff` then in order to create the lines again. (Be careful if you use this; it has been done by splitting the grouping `Axis_group_engraver` and creating functionality into separate contexts, but the clefs and time signatures may not do what you would expect.)



`'staff-line-positions.ly'`

The vertical positions of staff lines may be specified individually, by setting the **line-positions** property of the StaffSymbol.

