

‘AAA-intro.ly’

# Introduction

This document shows examples from the [LilyPond Snippet Repository](#).

In the web version of this document, you can click on the file name or figure for each example to see the corresponding input file.

This document is for LilyPond version 2.11.31

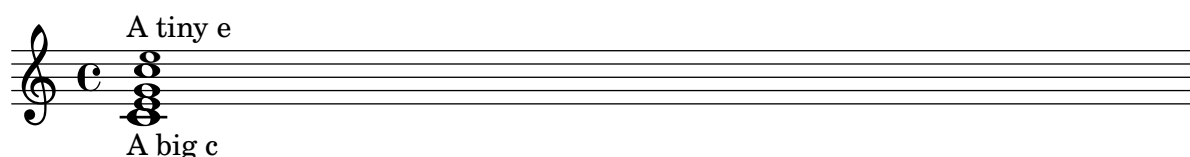
‘[changing-an-individual-notes-size-in-a-chord.ly](#)’

Individual noteheads in a chord can be modified with the `weak` command inside a chord, by altering the `'font-size` property.

Inside the chord (within the brackets `< >`), before the note to be altered, place the `weak` command, followed by `#'font-size` and define the proper size like `#-2` (a tiny notehead).

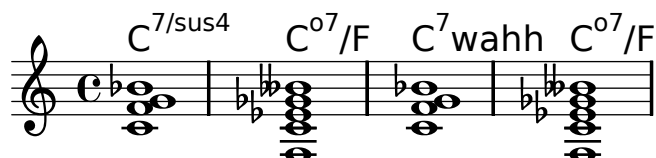
The code for the chord example shown:

## Modify an individual notehead's size in a chord



‘[chord-name-exceptions.ly](#)’

The property `chordNameExceptions` can be used to store a list of special notations for specific chords.



‘[chord-name-major7.ly](#)’

The layout of the major 7 can be tuned with `majorSevenSymbol`

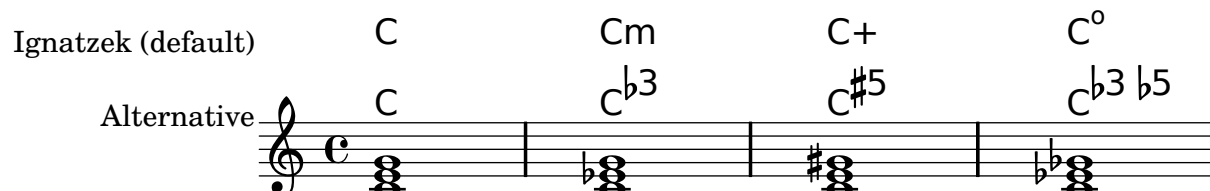
$C^{\triangle}$

$C^{j7}$

‘[customising-the-chord-naming-function-for-jazz.ly](#)’

Chord names are generated from a list of pitches. The functions which construct these names can be customised. Here are shown Jazz chords, following Ignatzek (pp. 17-18, 1995) and an alternative Jazz chord notation.

Chords following Banter (1987) can also be printed from this snippet, but are turned off for brevity.



Def C<sup>7</sup> Cm<sup>7</sup> C<sup>Δ</sup> C<sup>o7</sup> Cm<sup>Δ/b5</sup>

Alt<sup>5</sup> C<sup>7</sup> C<sup>7 b3</sup> C<sup>#7</sup> C<sup>b3 b5 b7</sup> C<sup>b3 b5 #7</sup>

Def C<sup>7/#5</sup> Cm<sup>Δ</sup> C<sup>Δ/#5</sup> C<sup>ø</sup>

Alt<sup>10</sup> C<sup>7 #5</sup> C<sup>b3 #7</sup> C<sup>#5 #7</sup> C<sup>7 b3 b5</sup>

Def C<sup>6</sup> Cm<sup>6</sup> C<sup>9</sup> Cm<sup>9</sup>

Alt<sup>14</sup> C<sup>6</sup> C<sup>b3 6</sup> C<sup>9</sup> C<sup>9 b3</sup>

Def Cm<sup>13</sup> Cm<sup>11</sup> Cm<sup>7/b5/9</sup> C<sup>7/b9</sup>

Alt<sup>18</sup> C<sup>13 b3</sup> C<sup>11 b3</sup> C<sup>9 b3 b5</sup> C<sup>7 b9</sup>

Def C<sup>7/#9</sup> C<sup>11</sup> C<sup>7/#11</sup> C<sup>13</sup>

Alt<sup>22</sup> C<sup>7 #9</sup> C<sup>11</sup> C<sup>9 #11</sup> C<sup>13</sup>

Def C<sup>7/#11/b13</sup> C<sup>7/#5/#9</sup> C<sup>7/#9/#11</sup> C<sup>7/b13</sup>

Alt<sup>26</sup> C<sup>9 #11 b13</sup> C<sup>7 #5 #9</sup> C<sup>7 #9 #11</sup> C<sup>11 b13</sup>

Def C<sup>7/b9/b13</sup> C<sup>7/#11</sup> C<sup>Δ/9</sup> C<sup>7/b13</sup>

Alt<sup>30</sup> C<sup>11 b9 b13</sup> C<sup>9 #11</sup> C<sup>9 #7</sup> C<sup>11 b13</sup>

Def  $C^{7/b9/b13}$   $C^{7/b9/13}$   $C^{\triangle/9}$   $C^{\triangle/13}$   
 Alt  $C^{11\ b9\ b13}$   $C^{13\ b9}$   $C^9\ \#7$   $C^{13\ \#7}$   
 $\text{Alt}_{34}$

Def  $C^{\triangle/\#11}$   $C^{7/b9/13}$   $C^{\text{sus}4}$   $C^{7/\text{sus}4}$   
 Alt  $C^9\ \#7\ \#11$   $C^{13\ b9}$   $C^{\text{add}4\ 5}$   $C^{\text{add}4\ 5\ 7}$   
 $\text{Alt}_{36}$

Def  $C^{9/\text{sus}4}$   $C^{\text{add}9}$   $C^{\text{m}\text{add}11}$   
 Alt  $C^{\text{add}4\ 5\ 7\ 9}$   $C^{\text{add}9}$   $C^{\flat3\ \text{add}11}$   
 $\text{Alt}_{42}$

‘inserting-a--markup-when-using-chordmode.ly’

A way to insert a \markup { . . . }string in \chords { . . . }.

$C$  Tacet  $C$

‘volta-brackets-over-chord-names.ly’

Volta brackets can be placed over chord names. Just set the voltaOnThisStaff property to "true" for the ChordNames context and to "false" for the topmost ordinary Staff context.

$C$   $\overbrace{1-2.}^{\quad}$   $C$