

‘AAA-intro.ly’

# Introduction

This document shows examples from the [LilyPond Snippet Repository](#).

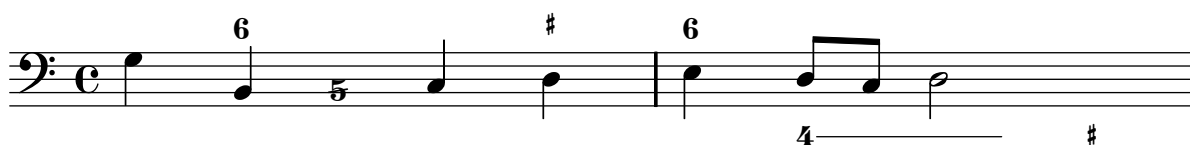
In the web version of this document, you can click on the file name or figure for each example to see the corresponding input file.

This document is for LilyPond version 2.11.31

‘adding-a-figured-bass-above-or-below-the-notes.ly’

When writing a figured bass, here’s a way to specify if you want your figures to be placed above or below the bass notes, by defining the `BassFigureAlignmentPositioning` `#’direction` property (exclusively in a `Staff` context). Choices are `#UP` (or `#1`), `#CENTER` (or `#0`) and `#DOWN` (or `#-1`).

As you can see here, this property can be changed as many times as you wish. Use `\once \override` if you don’t want the tweak to apply to the whole score.



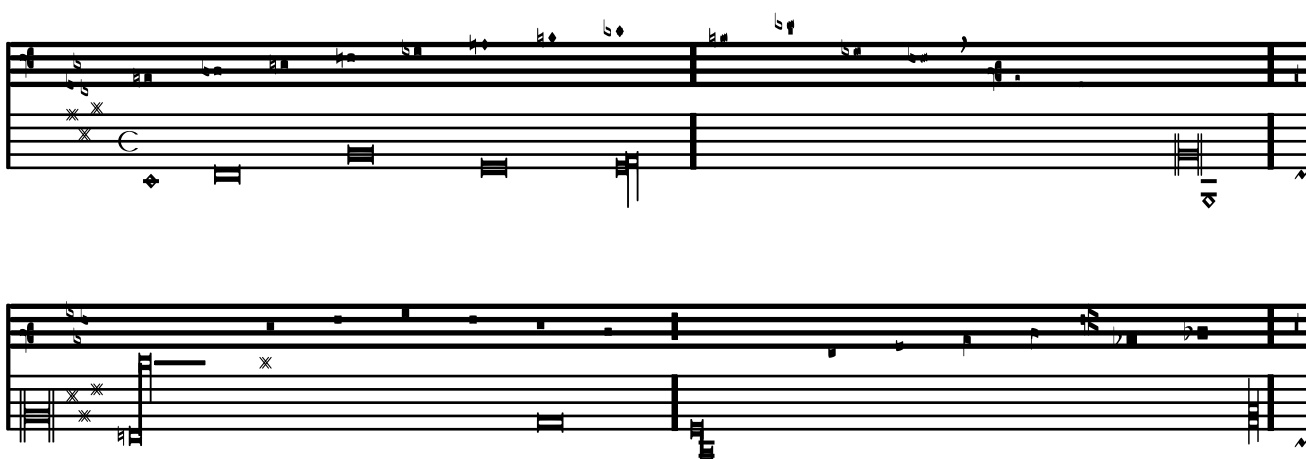
‘ancient-accidentals.ly’

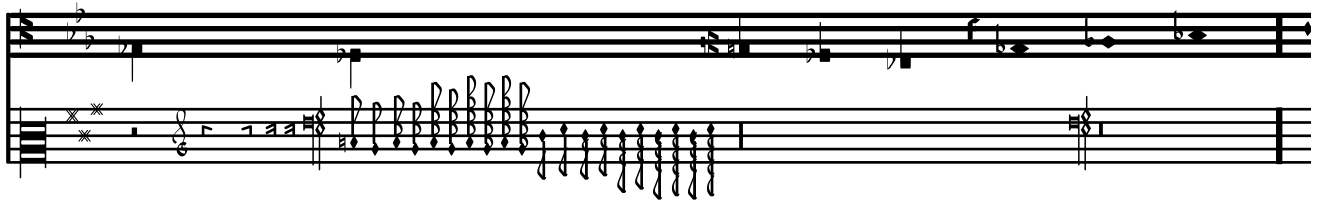
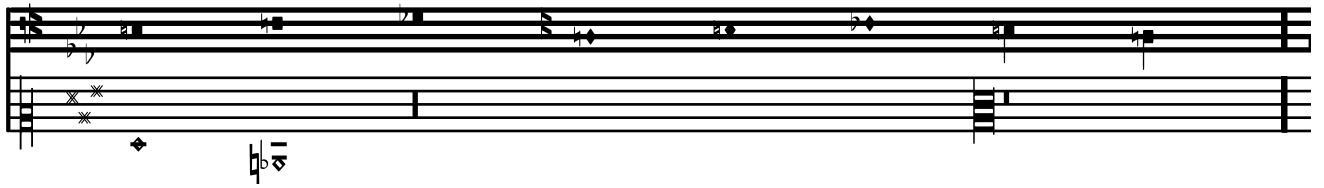
Accidentals are available in different ancient styles, which all are collected here.



‘ancient-fonts.ly’

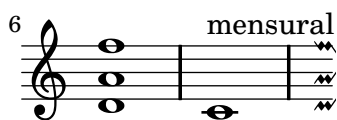
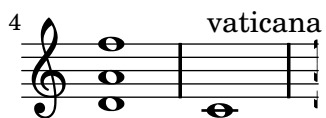
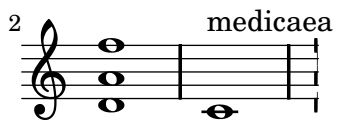
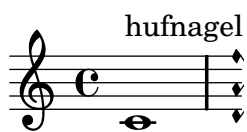
Here are shown many (all?) of the symbols that are included in LilyPond’s support of ancient notation.





‘custodes.ly’

Custodes may be engraved in various styles.

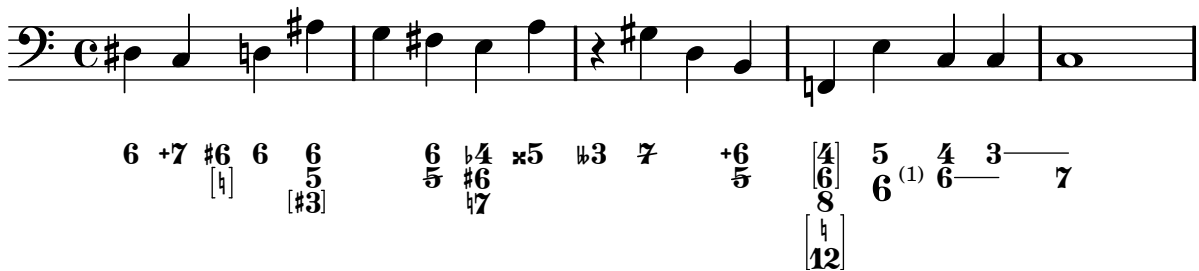




`‘demonstrating-lilypond-support-for-figured-bass.ly’`

This snippet shows LilyPond’s "limited support" (says the Documentation) for figured bass... well, maybe not so limited after all; moreover, though there are numerous BassFigure objects you can always use text markups instead to get precisely what you need.

You can find all of these examples in the manual; read the "Figured bass" section to learn how to add a figured bass with simple but powerful notation.



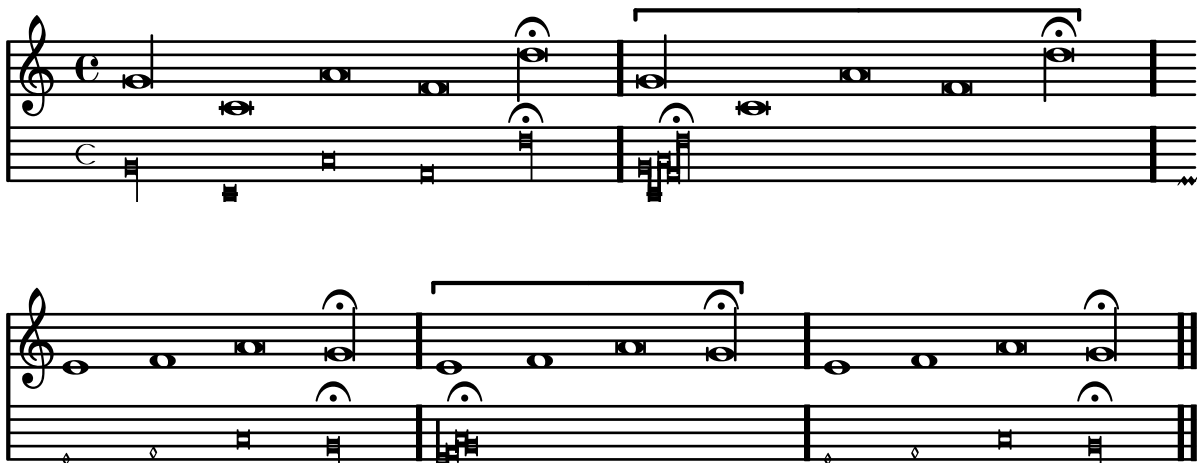
`‘gregorian-scripts.ly’`

Here is demonstrated a preliminary support of Gregorian Scripts: ictus, circulus, semicirculus, accentus, episem.



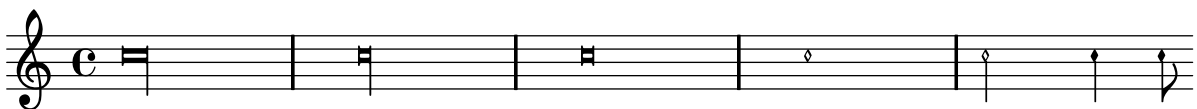
`‘mensural-ligatures.ly’`

In mensural ligatures, notes with ancient durations are printed in a tight manner.



`‘mensural-note-heads.ly’`

Mensural notes may also have note heads.



`'vaticana-ligatures.ly'`

Vaticana ligature uses four staff lines, special clef, and calligraphic notes.

