

The Patriarch

The First World : Good

Florent (Warly) VILLARD

December 2002 - September 2003XF

Version : 0.0.1 - 2005, October, 16th

Copyright ©2002,2003,2004,2005, Florent Villard

Cette création est mise à disposition selon le Contrat Paternité - Partage des Conditions Initiales à l'Identique disponible en ligne  
[http ://creativecommons.org/licenses/by-sa/2.0/fr/](http://creativecommons.org/licenses/by-sa/2.0/fr/)  
ou par courrier postal à Creative Commons, 559 Nathan Abbott Way, Stanford, California 94305, USA.

# Remerciements

# Préface

Thomas  
September, 2003



# Châteauvieux

Ylraw

Sydney, 2002, December, 14th - 2002, December, 22nd





Sarah

Desert

# Patrick



Melbourne

# Bread

Naoma

# Reunion



**Erik**

**Thomas**



Alive

# Riviera and Sun

War

Étienne

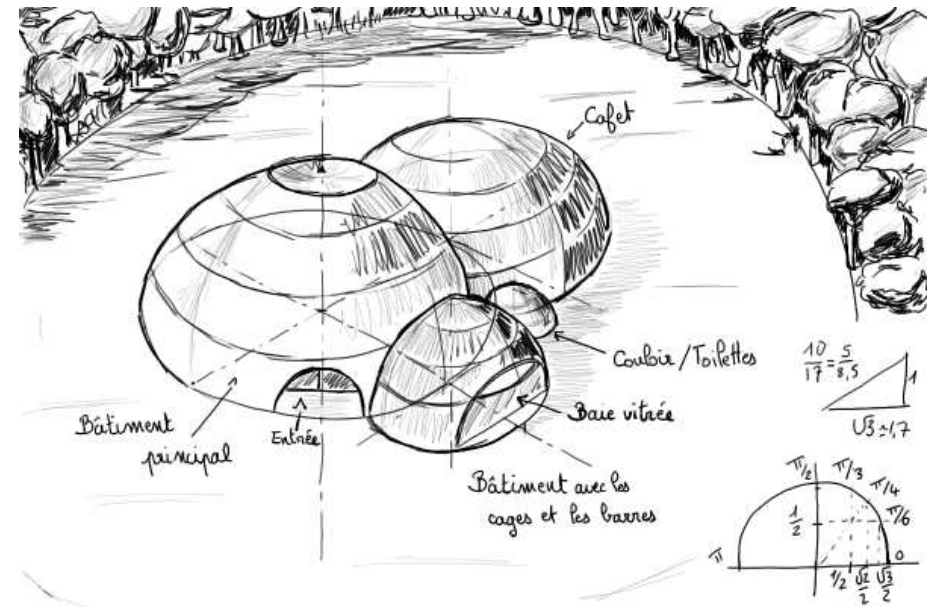
**Ylraw 2**  
**Sydney, 2002, December 22nd - Stycchia, Day 130**





## Sydney 2

# The beyond

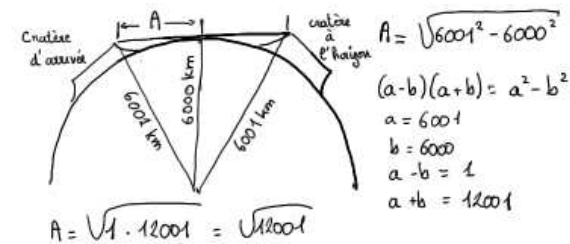
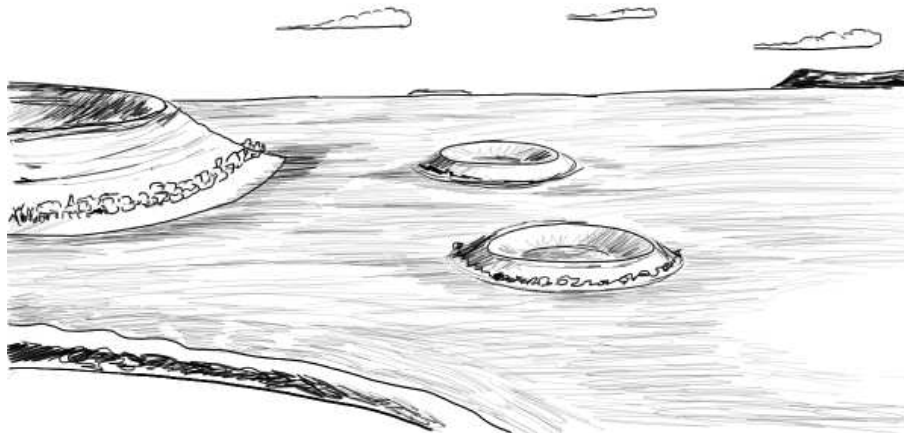


Bakorel

# Departure

Stycchia

# Crater



Méthode de Newton (Méthode de la tangente) pour trouver  $\sqrt{12001}$ .

Pour la fonction  $f(x) = x^2 - 12001$ ,  $f(x) = 0$  pour  $x = \sqrt{12001}$

Prenons  $x_0 = 100$

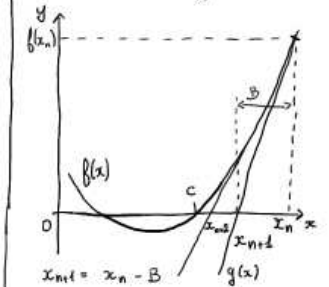
$$x_1 = 100 - \frac{f(100)}{f'(100)} = 100 - \frac{10000 - 12001}{2 \times 100} = 100 + \frac{2001}{200} \approx 110$$

$$x_2 = 110 - \frac{f(110)}{f'(110)} = 110 - \frac{12100 - 12001}{220} = 110 - \frac{99}{220} \approx 109,5$$

$$A \approx 109,5 \text{ km}$$

Distance du cratère  $\approx 220 \text{ km}$

Méthode de la tangente

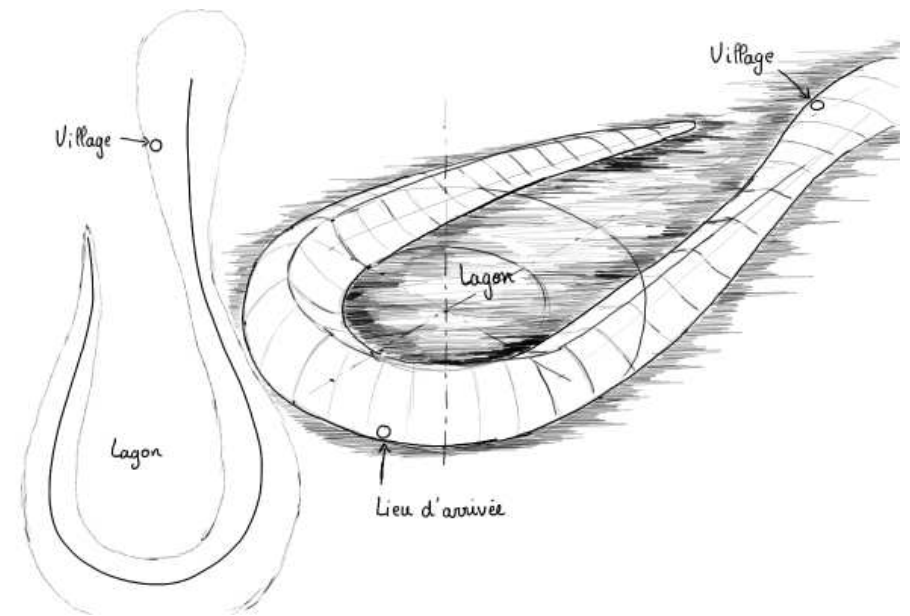


La suite des  $x_n$  tend vers  $C$  pour lequel  $f(x) = 0$

# Crossing



# Lagoon



# Beasts

Village

Ylraw 2  
Pénoplée



# Childhood

# Love Affairs

# Symphone



# Debate

# Free Choice

Naoma  
Sydney, 2003, January, 2nd



## Wake Up 2

# Appendix



## Relation Table

The image displays four identical, empty coordinate systems arranged in a 2x2 grid. Each coordinate system consists of a horizontal x-axis and a vertical y-axis intersecting at an origin. The axes are represented by thin black lines. There are no tick marks, labels, or data plotted on any of the axes. The background is a solid, light gray color.



# Table des matières

Thomas September, 2003	4
Châteauvieux	5
Ylraw Sydney, 2002, December, 14th - 2002, December, 22nd	7
Sarah	8
Desert	9
Patrick	10
Melbourne	11
Bread	12
Naoma	13
Reunion	14
Erik	15
Thomas	17
Alive	18

TABLE DES MATIÈRES	48
Riviera and Sun	19
War	20
Étienne	21
Ylraw 2 Sydney, 2002, December 22nd - Stycchia, Day 130	23
Sydney 2	24
The beyond	25
Bakorel	26
Departure	27
Stycchia	28
Crater	29
Crossing	30
Lagoon	31
Beasts	32
Village	33
Ylraw 2 Pénoplée	35
Childhood	36
Love Affairs	37
Symphone	38
Debate	39

TABLE DES MATIÈRES	49
Free Choice	40
Naoma Sydney, 2003, January, 2nd	42
Wake Up 2	43
Appendix	45
Relation Table	46

# Table des figures

.....	10
.....	25
.....	29
.....	29
.....	31