

‘AAA-intro.ly’

# Introduction

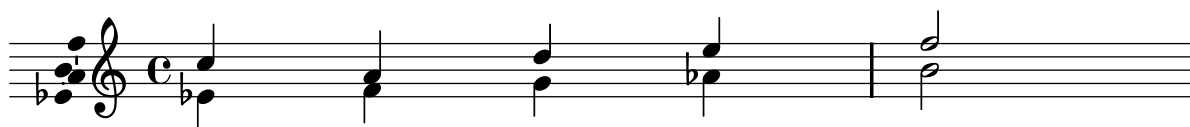
This document shows examples from the [LilyPond Snippet Repository](#).

In the web version of this document, you can click on the file name or figure for each example to see the corresponding input file.

**This document is for LilyPond version 2.11.31**

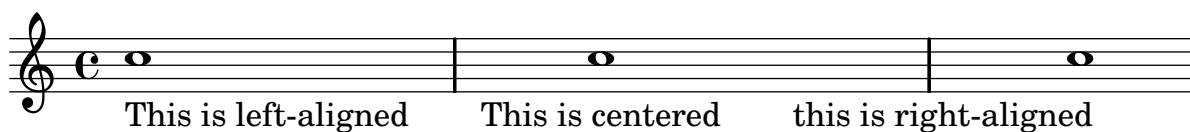
`‘adding-ambiti-per-voice.ly’`

Ambits can be added per voice. In that case, the ambitus must be moved manually to prevent collisions.



`‘aligning-lyrics.ly’`

You can specify different horizontal alignment for your lyrics, by overriding the `#’self-alignment-X` property of the `LyricText` object. `#-1` is left, `#0` is center and `#1` is right; however, you can use `#LEFT`, `#CENTER` and `#RIGHT` as well.



`‘ambitus.ly’`

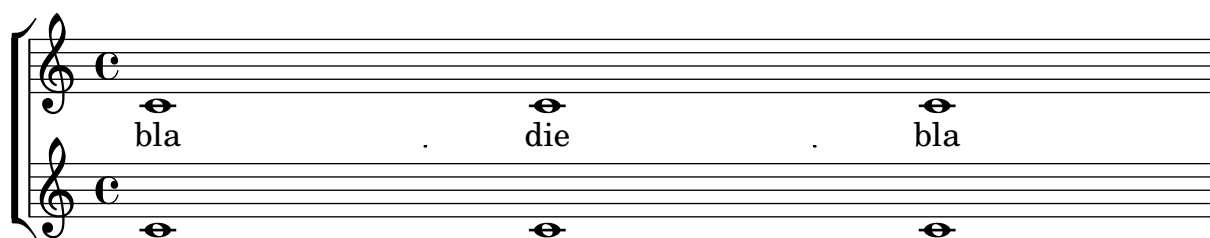
Ambituses indicate pitch ranges for voices.

Accidentals only show up if they’re not part of key signature. `AmbitusNoteHead` grobs also have ledger lines.



`‘displaying-bar-lines-on-lyrics.ly’`

You can move `Bar_engraver` and `Span_bar_engraver` to a different engraving context, if you want, for example, bar lines on lyrics.



`'how-to-put-ties-between-syllables-in-lyrics.ly'`

This can be achieved by separating those syllables by tildes.

wa o a

`'lyric-combine.ly'`

With the `\lyricsto` mechanism, individual lyric lines can be associated with one melody line. For each lyric line, they can be tuned whether to follow melismata or not.

A musical staff in treble clef with a common time signature 'C'. The melody consists of several notes, some of which are tied across bar lines. Below the staff, the lyrics are arranged in three columns. The first column contains 'bla', 'bla', and 'nes' on three separate lines. The second column contains 'ab', 'blob', and 'ted' on three separate lines. The third column contains 'blob', 'blob', and 'lyrics' on three separate lines. A horizontal brace spans the first two notes of the melody, and another horizontal brace spans the last three notes of the melody.

`'vertical-brace-spanning-several-lyrics-lines.ly'`

This example shows a trick to insert a vertical brace when going from several stanzas into a common ending in the lyrics. (An alternative is of course to just skip the brace, especially if you add a line break instead).

A musical staff in treble clef with a common time signature 'C'. The melody consists of several notes, some of which are tied across bar lines. Below the staff, the lyrics are arranged in three lines. The first line is 'Here is some ly - rics'. The second line is 'Here is some ly - rics'. The third line is 'Here is some ly - rics'. A vertical brace groups these three lines. To the right of the brace, the lyrics 'Here comes some more' are written on a single line.