

‘AAA-intro.ly’

# Introduction

This document shows examples from the [LilyPond Snippet Repository](#).

In the web version of this document, you can click on the file name or figure for each example to see the corresponding input file.

This document is for LilyPond version 2.11.31

`'combining-two-parts-on-the-same-staff.ly'`

The part combiner tool ( `\partcombine` command ) allows you to combine different parts on a same Staff. You can choose whether you want or don't want to add texts such as "solo" or "a2", by defining the `printPartCombineTexts` property.

For vocal scores (hymns), there is no need to add solo/a2 texts, so they should be switched off. However, you'd better not use it if there are any solos, as they won't be indicated. In such cases, you may simply want to use standard LilyPond polyphony.

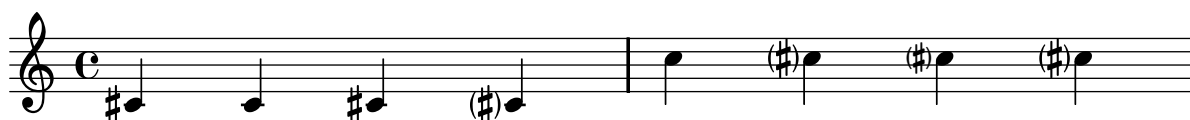
This snippet presents the three ways two parts can be printed on a same staff : standard polyphony, `\partcombine` without texts, and `\partcombine` with texts.



`'forced-and-cautionary-accidentals.ly'`

Normally accidentals are printed automatically, but you may also print them manually. A reminder accidental can be forced by adding an exclamation mark ! after the pitch. A cautionary accidental (i.e., an accidental within parentheses) can be obtained by adding the question mark '?' after the pitch.

Cautionary accidentals may be made smaller, or placed inside parentheses



`'makam.ly'`

Makam is Turkish type of melody that uses  $1/9$  tone microtonal alterations.



`'preventing-stem-extension.ly'`

Extending stems to the center line may be prevented using `no-stem-extend`.



`'rest-styles.ly'`

Rests may be used in various styles.

