

‘AAA-intro.ly’

# Introduction

This document shows examples from the [LilyPond Snippet Repository](#).

In the web version of this document, you can click on the file name or figure for each example to see the corresponding input file.

This document is for LilyPond version 2.11.31

`'adding-accidentals-to-a-trillspanner.ly'`

By overriding `edge-text`, you can insert an accidental after the trill sign in a trillspanner, but this can look ugly, since the accidental isn't aligned.

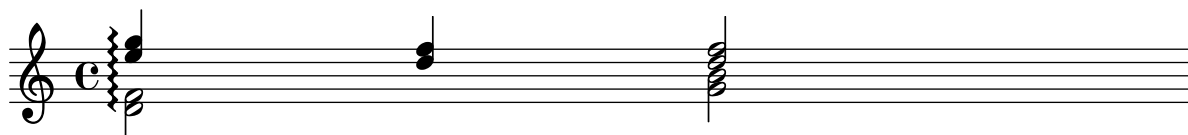
With a few tweaks to the script size and position, you can achieve quite pleasing results.



`'attaching-an-arpeggio-to-different-voices-inside-a-same-staff.ly'`

If you've read the manual, you already know that an arpeggio can be drawn across to staves in PianoStaff context, if you set the `connectArpeggios` property.

However, printing an arpeggio between two simultaneous chords inside a same staff (with more than one voice), is a bit more tricky. As the `Span-arpeggio-engraver`, which is in charge when arpeggios have to be connected, is not included by default in the Staff context, you have to add it by yourself using the `\consists` command.



`'breathing-sign.ly'`

Breathing signs are available in different tastes: commas (default), ticks, vees and 'railroad tracks' (caesura).



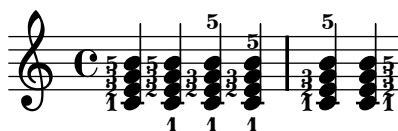
`'combining-dynamics-with-markup-texts.ly'`

Some dynamics may involve text indications (such as "pi forte", "piano subito", etc.). They can be produced using a `\markup` bloc.



`'fingering-chords.ly'`

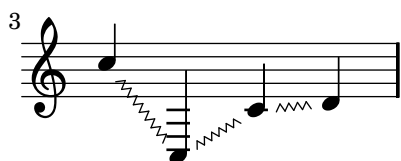
With the new chord syntax, it is possible to associate fingerings uniquely with notes. This makes it possible to add horizontal fingerings to notes.



`'glissando.ly'`

Between notes, there may be simple glissando lines. Here, the first two glissandi are not consecutive.

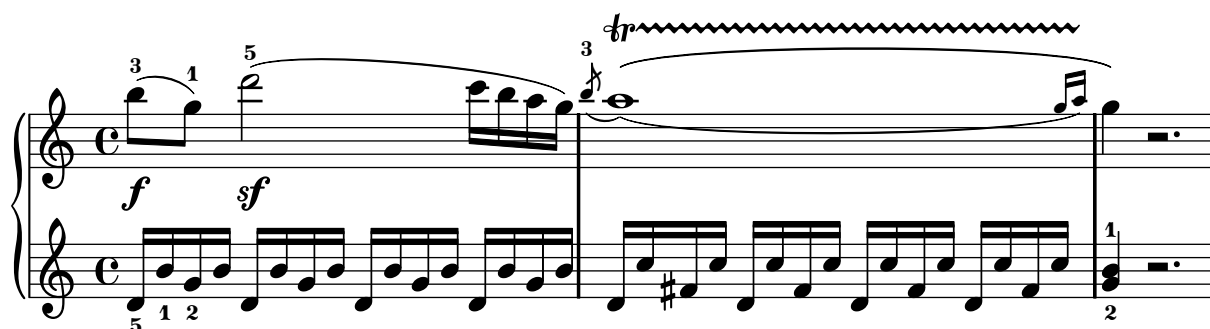
The engraver does no time-keeping, so it involves some trickery to get `>` working correctly.



`'how-to-print-a-classical-trill-combining-acciaccatura,-trillspan-and-aftergrace.ly'`

Here is an excerpt of Mozart's KV545 piano Sonata (as brought to Mutopia by A. Sierra), in which you can see the typical classical trill, i.e. beginning with an acciaccatura, then trilling the whole bar, and ending with two afterGrace notes.

This combination, which is rather frequent (if not systematic) in classical piano music, requires a rather precise typesetting: first the `\acciaccatura`, then the `\afterGrace` (which you have to define using Scheme-like syntax), then the main note, the `TrillSpan` and the two final notes (don't forget the curly braces here). You can also notice here the `\slurDown`, which avoids slurs collision.



`'line-arrows.ly'`

Arrows can be applied to text-spanners and line-spanners (such as the Glissando)



`'line-styles.ly'`

Displays all available line styles.



`'setting-the-control-points-of-a-slur-manually.ly'`

In extreme cases, you can resort to setting the `control-points` of a slur manually, although it involves a lot of trial and error. Be sure to force line breaks at both sides, since different horizontal spacing will require rearrangement of the slur.



`'setting-the-minimum-length-of-a-slur-to-separate-notes.ly'`

By setting the minimum length of a slur, notes are more separated.

