

‘AAA-intro.ly’

Introduction

This document shows examples from the [LilyPond Snippet Repository](#).

In the web version of this document, you can click on the file name or figure for each example to see the corresponding input file.

This document is for LilyPond version 2.11.31

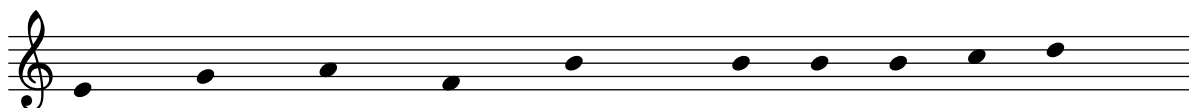
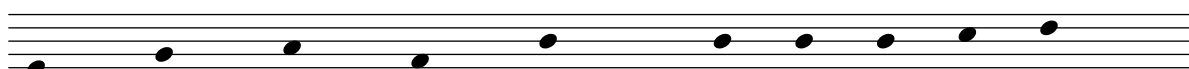
`‘engravers-one-by-one.ly’`

The notation problem, creating a certain symbol, is handled by plugins. Each plugin is called an Engraver. In this example, engravers are switched on one by one, in the following order:

- note heads
- staff symbol,
- clef,
- stem,
- beams, slurs, accents,
- accidentals, bar lines, time signature, and key signature.

Engravers are grouped. For example, note heads, slurs, beams etc. form a Voice context. Engravers for key, accidental, bar, etc. form a Staff context.

You may only see the first example in this document; please download this snippet and run it from your own computer.





`'removing-time-signature-and-bar-lines.ly'`

Engravers can be removed one by one. Here, the time signature and bar lines have been removed.

