

‘AAA-intro.ly’

Introduction

This document shows examples from the [LilyPond Snippet Repository](#).

In the web version of this document, you can click on the file name or figure for each example to see the corresponding input file.

This document is for LilyPond version 2.11.31

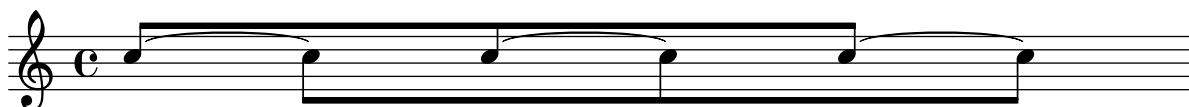
`'altering-the-number-of-stems-in-a-beam.ly'`

You can alter the number of stems in a beam. In this example, two sets of four 32nds are joined, as if they were 8th notes.



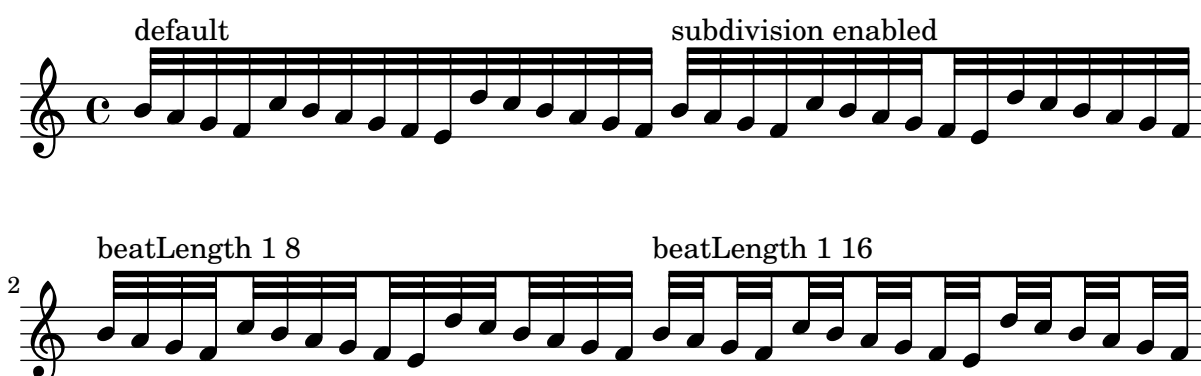
`'alternating-beam-directions.ly'`

The eighth notes may be seemingly attached to different beams, and the corresponding notes connected by ties. Such a situation may occur, for example, in the cello suites.



`'automatic-beam-subdivisions.ly'`

Lilypond can subdivide beams automatically. Set the property `subdivideBeams`, and beams are subdivided at beat positions (as specified in beat length)



`'beam-across-line-breaks.ly'`

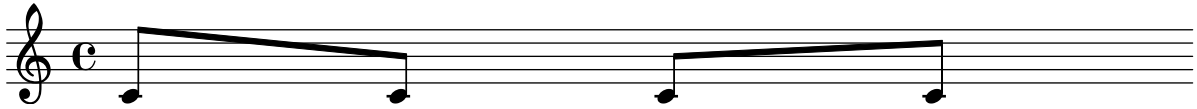
By default, beams can't be printed across line breaks. Here's a way to force the line break, by setting the `#'breakable` property. See also in the manual the "Line Breaking" and "Manual beams" sections.





`'controlling-manually-beam-positions.ly'`

Beam positions may be controlled manually, by overriding the `positions` setting of the `Beam` grob.



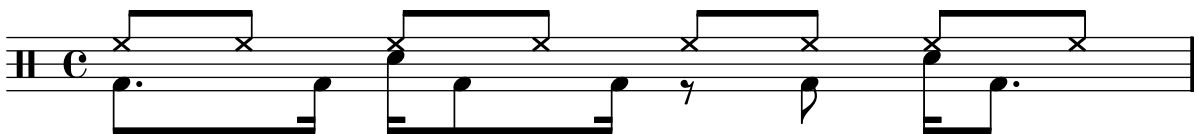
`'fine-tuning-manual-beaming.ly'`

By setting the `#'beaming` property, it is possible to override beaming rules. You may preferably want to use `\once` when doing so, as this property cannot be shared between objects.



`'how-to-define-autobeamsettings-in-the--layout-bloc.ly'`

If you need to modify the automatic beaming behaviour (see "Setting automatic beam behavior") in the `\layout` bloc, here is a simple way to do it.



`'how-to-improve-automatic-beam-groups-when-frequently-using--time.ly'`

Groups of beamed notes can be made by setting the `subdivideBeams` property. However, if you have "ime"-statements inside your score, you'll need to set the `beatLength` again after each ime-statement (that has a denominator that is not 8).

This happens because the "ime"-statements reset the `beatLength`-value to the denominator of the time signature. So, if you have many meter-changes, you can use the following function named "imenb #X #Y" instead of "ime X/Y".



`'laissez-vibrer-ties.ly'`

Laissez vibrer ties should avoid dots and staff lines, similar to normal ties. They have fixed size. Their formatting can be tuned with `tie-configuration`



`‘overriding-the-automatic-beamer.ly’`

The auto-beamer, which can be overridden, will only engrave beams that end before encountering of

- * a rest,
- * another, manually entered beam, or
- * a bar line.

The `autoBeaming` can also be turned off.



`‘short-tremolos.ly’`

Short tremolos (involving eighth notes or shorter durations) can be obtained; in such a case only one beam is connected to the stems.

