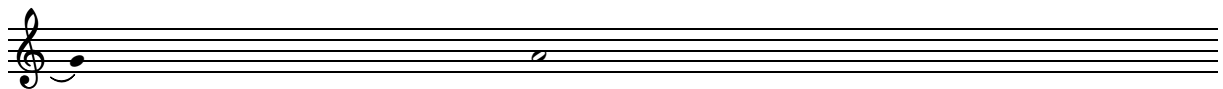
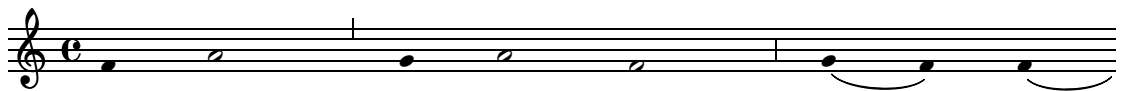


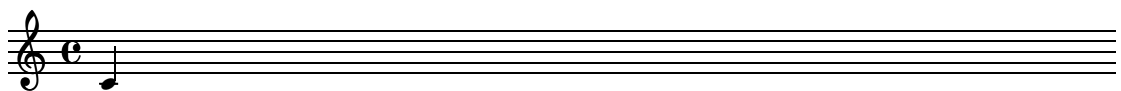
`'gregorian-transcription.ly':`

Modern transcriptions of gregorian music. Gregorian music has no measure, no stems, only uses half and quarter notes, and two types of barlines, a short one indicating a rest, a second indicating a breath mark.



`'header.ly':`

The standard header that ought to be above a file.



`'jazz-combo.ly':`

Jazz tune for combo (horns, piano, drums, bass, guitar).

Trumpet

Alto Sax

Bari Sax

Trombone

Guitar

Piano

Bass

Drums

Cm^{Δ} $D^{\Delta/9}$

B^{Δ} $C^{\#m7}$

Solo

'melody-chords.ly':

Lead sheet format: chords with melody.

Cm Fm^7 G^{Δ} $C+$ D° B

'melody-lyrics-chords.ly':

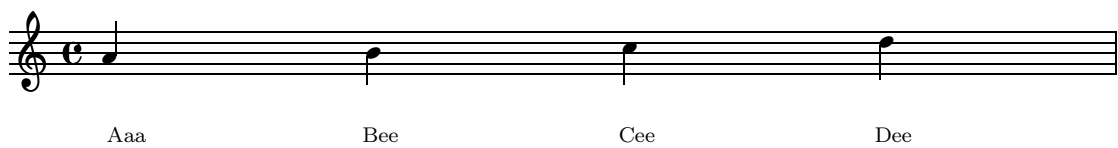
Popsong format: chords, melody and lyrics.

A C

Aaa Bee Cee Dee

'melody-lyrics.ly':

Melody and lyrics.



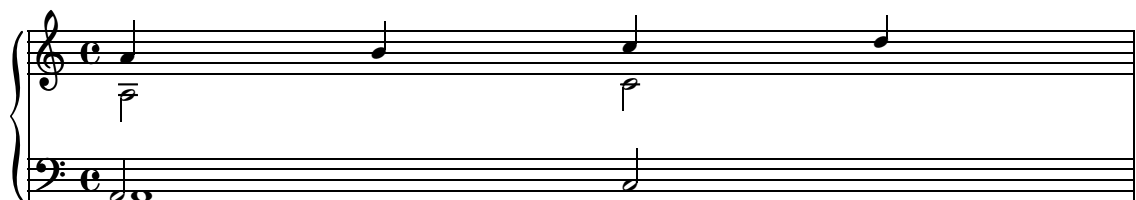
`'melody.ly':`

Only a melody.



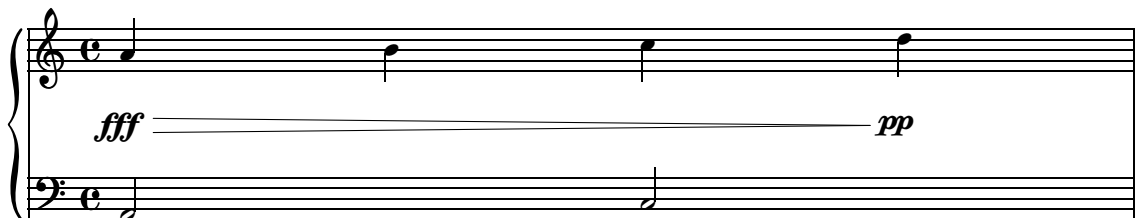
`'piano-4-voices.ly':`

Polyphonic piano music



`'piano-dynamics.ly':`

Template that puts dynamics on a separate line, so it is neatly centered between staves.

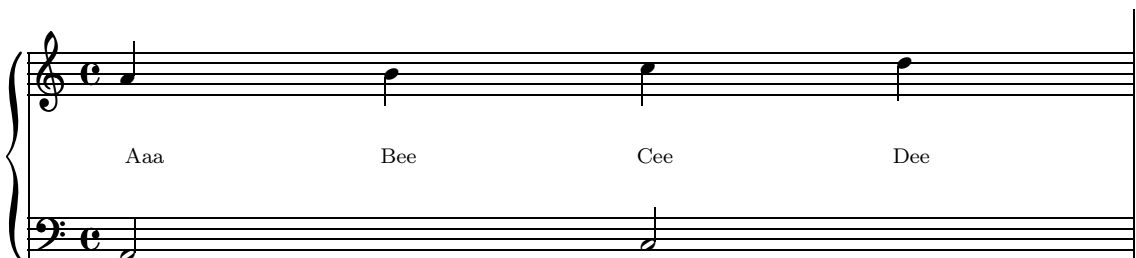


⌘

*

`'piano-lyrics.ly':`

Lyrics between two staves.



`'piano-melody-lyrics.ly':`

Classical song format: one staff with melody and lyrics, and piano accompaniment.

A musical score for a piano and voice. The vocal line is on a single staff with a treble clef and a common time signature (C). It contains four quarter notes with lyrics 'Aaa', 'Bee', 'Cee', and 'Dee' underneath. The piano accompaniment consists of two staves (treble and bass clefs) with a common time signature. The right hand has four quarter notes corresponding to the vocal line. The left hand has two quarter notes, one under the first vocal note and one under the second.

`'piano.ly':`

Simple piano music.

A musical score for a SATB vocal ensemble. It features four staves, each with a different clef (Soprano: treble, Alto: treble, Tenor: bass, Bass: bass) and a common time signature (C). Each staff contains a single quarter note, representing the vocal parts. The notes are all on the same pitch, indicating a homophonic setting.

`'satb.ly':`

Example template for a SATB vocal score.

A musical score for a SATB vocal ensemble, similar to the previous one but with lyrics. It features four staves (Soprano, Alto, Tenor, Bass) with a common time signature (C). Each staff contains a single quarter note. The lyrics are 'hi', 'ha', 'hu', and 'ho' for the Soprano, Alto, Tenor, and Bass parts respectively. The Soprano part has a slur over the second and third notes.